

EXISTING ROOF COMPOSITION(S):

ROOF AREA-1.1

- STEEL DECK
- 1/2 DRYWALL
- 1" KRAFT PAPER
- 3" FIBERGLASS INSULATION
- 1" FIBER BORD
- 4 PLY ASPHALT FELTS

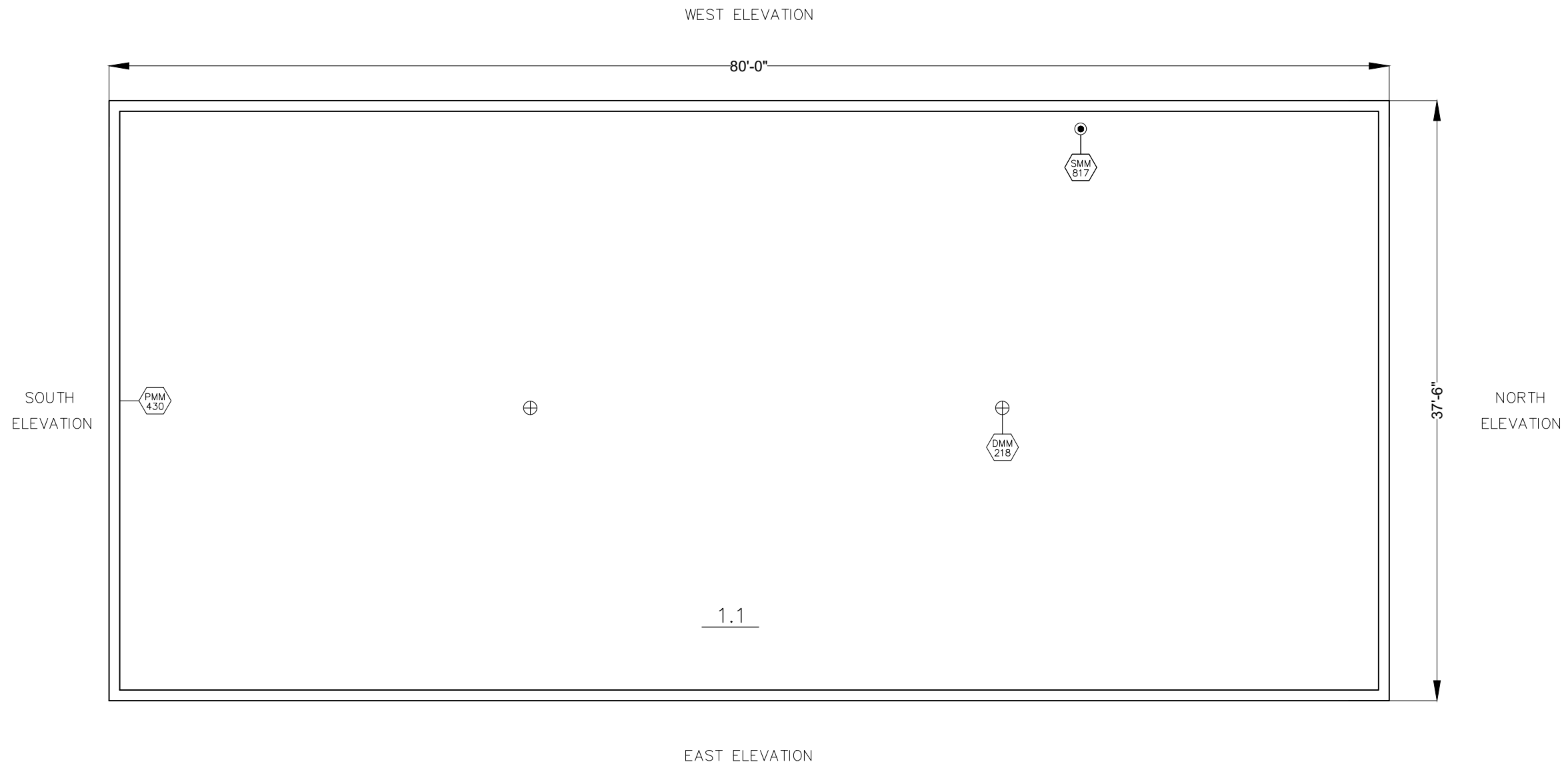
NEW ROOF COMPOSITION(S):

ROOF AREA-1.1

- 1.5" GALVANIZED METAL ROOF DECK
- 1/2 UNFACED GYPSUM-FIBER BOARD (SECUROCK)
- 1 PLY SELF ADHERING SOPRAVAP'R (SBS), 0.8 MM
- POLYISOCYANRATE INSULATION, ORGANIC FACER
- SEMI RIGID ASPHALTIC COVER BOARD (3/16")
- 2 PLY MODIFIED BITUMEN (SBS) MEMBRANE

ROOF AREA (SQ. FT.)

1.1 - 3000
TOTAL = 3000



LEGEND

ROOF PROJECTIONS:

- | | |
|--|----------------------------------|
| | HVAC UNIT ON SLEEPERS |
| | LADDER |
| | LIGHT POST |
| | CHANGE IN ELEV. |
| | PIPE SUPPORT |
| | CHIMNEY |
| | PITCH POCKET |
| | CONDUIT LINE |
| | PLUMBING OR SOIL STACK |
| | CONTROL JOINT |
| | RA ROOF ANCHOR |
| | DRAIN |
| | SATELLITE DISH |
| | EXHAUST FAN ON CURB |
| | SCUPPER |
| | EXPANSION JOINT |
| | SECURITY CAMERA |
| | EXPLOSION HATCH |
| | SKYLIGHT |
| | FLAGPOLE |
| | SLOPE |
| | GAS PIPELINE |
| | SQUARE VENT |
| | GOOSENECK VENT |
| | SQUARE VENT ON OVERSIZED CURB |
| | TALLCONE OR "B" VENT |
| | GOOSENECK VENT ON OVERSIZED CURB |
| | TALLCONE OR "B" VENT ON CURB |
| | HATCH |
| | HVAC UNIT |
| | UNUSED OPENING |
| | HVAC UNIT ON CURB |
| | WALKWAY PADS |

DRAINAGE:

- | | | | |
|--|-----------------------------|--|--------------------------------|
| | TAPERED INSULATION LAYOUT | | NEW ROOF DRAIN TO BE INSTALLED |
| | DIRECTION OF WATER DRAINAGE | | INSULATION SUMP |
| | 4.5" TOTAL INSUL. THICKNESS | | INSULATION CRICKET |
-

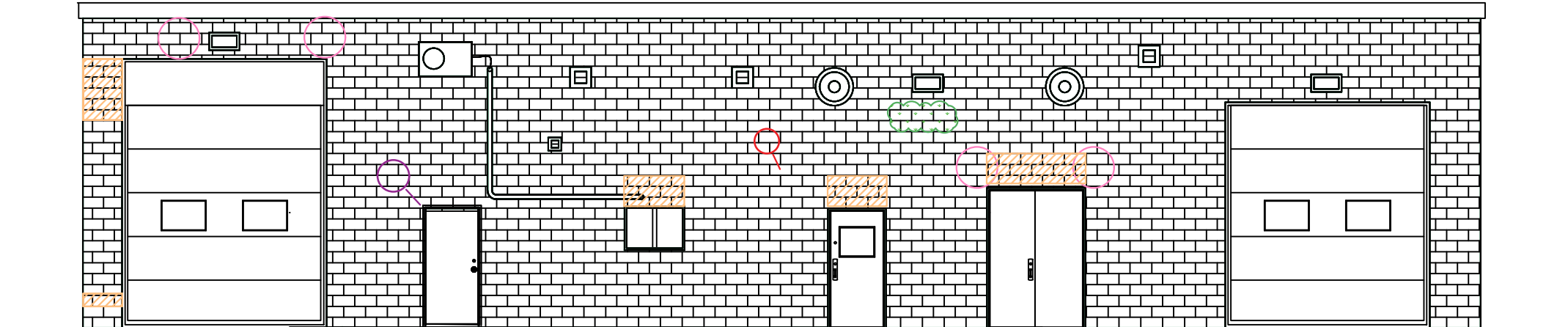
NOTE: CONTRACTOR RESPONSIBLE FOR VERIFICATION OF ALL DIMENSIONS AND MEASUREMENTS TO OWN SATISFACTION. © 2022 BY IRC GROUP INC.

IRC Building Sciences Group
A Rimkus Company
69 MAPLE AVENUE
NEW GLASGOW, NOVA SCOTIA, B2H 2B3
TEL: 902.695.5549 WWW.IRCGROUP.COM

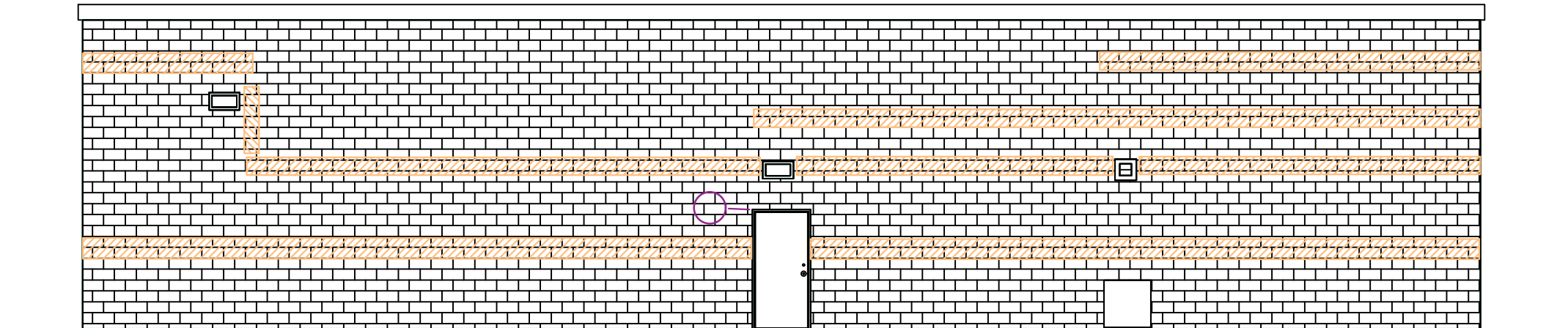
TITLE: ROOF PLAN
CLIENT: CITY OF SAINT JOHN
PROJECT: EASTERN WASTE TREATMENT FACILITY
SAINT JOHN, NB

IRC #:	25049	PROJECT NORTH: (TRUE NORTH)
W.O.#:	NR22-003	
SCALE:	1/8" = 1'-0"	
DATE:	FEB. 28/22	
DRN. BY:	M.M	DWG.#:
CHK. BY:	V.A	R1

EAST ELEVATION



WEST ELEVATION



PEN COLOR CODE: C1-0.10 C2-0.20 C3-0.30 C4-0.40 C5-0.50 C6-0.10 C7-0.15

LEGEND:

-  CRACKED BRICK
-  STEP CRACKS
-  CRACKS AT LENTEL

-  MORTAR LOSS
-  VEGETATION GROWTH

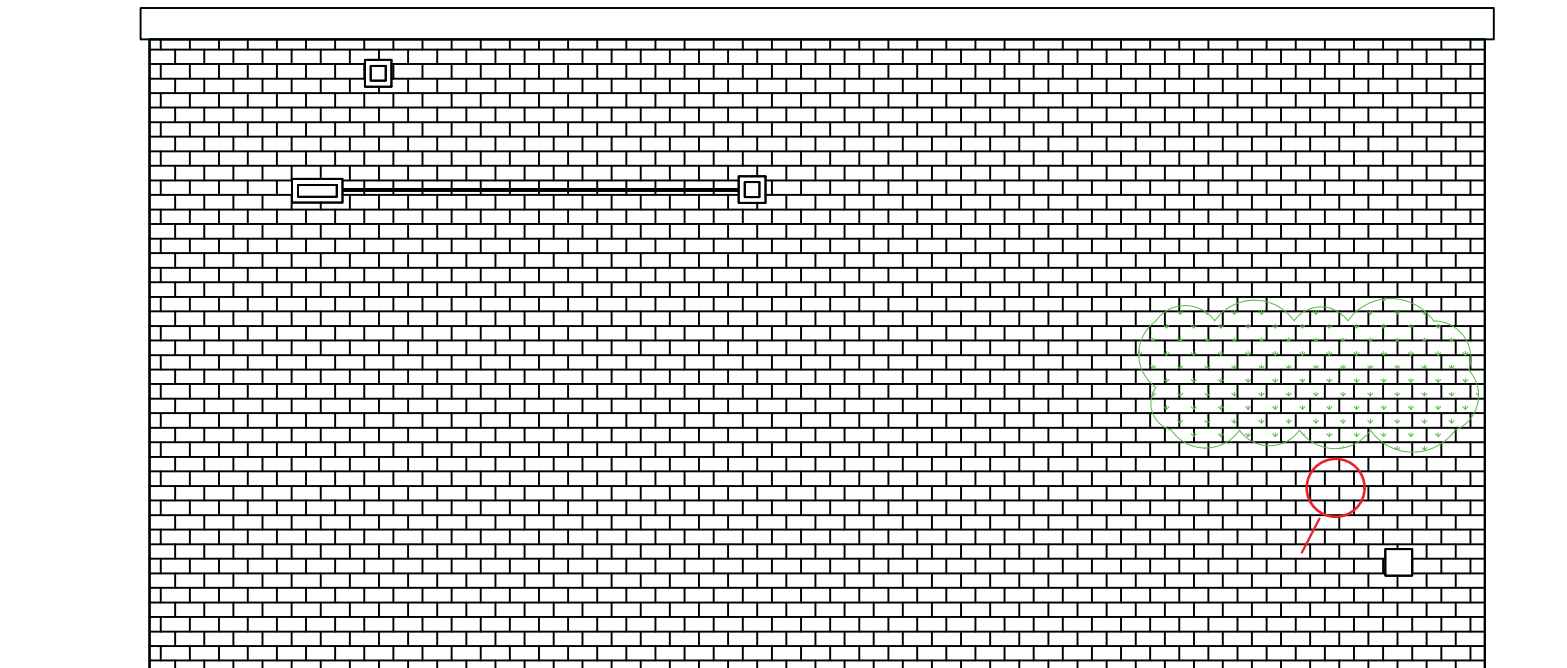
irc Building Sciences Group
 A Rimkus Company
 69 MAPLE AVENUE
 NEW GLASGOW, NOVA SCOTIA, B2H 2B3
 TEL: 902.695.5549
 1.888.607.5245 WWW.IRCGROUP.COM

TITLE:	EAST AND WEST ELEVATION
CLIENT:	CITY OF SAINT JOHN
PROJECT:	EASTERN WASTE WATER TREATEMENT FACILITY SAINT JOHN, NEW BRUNSWICK

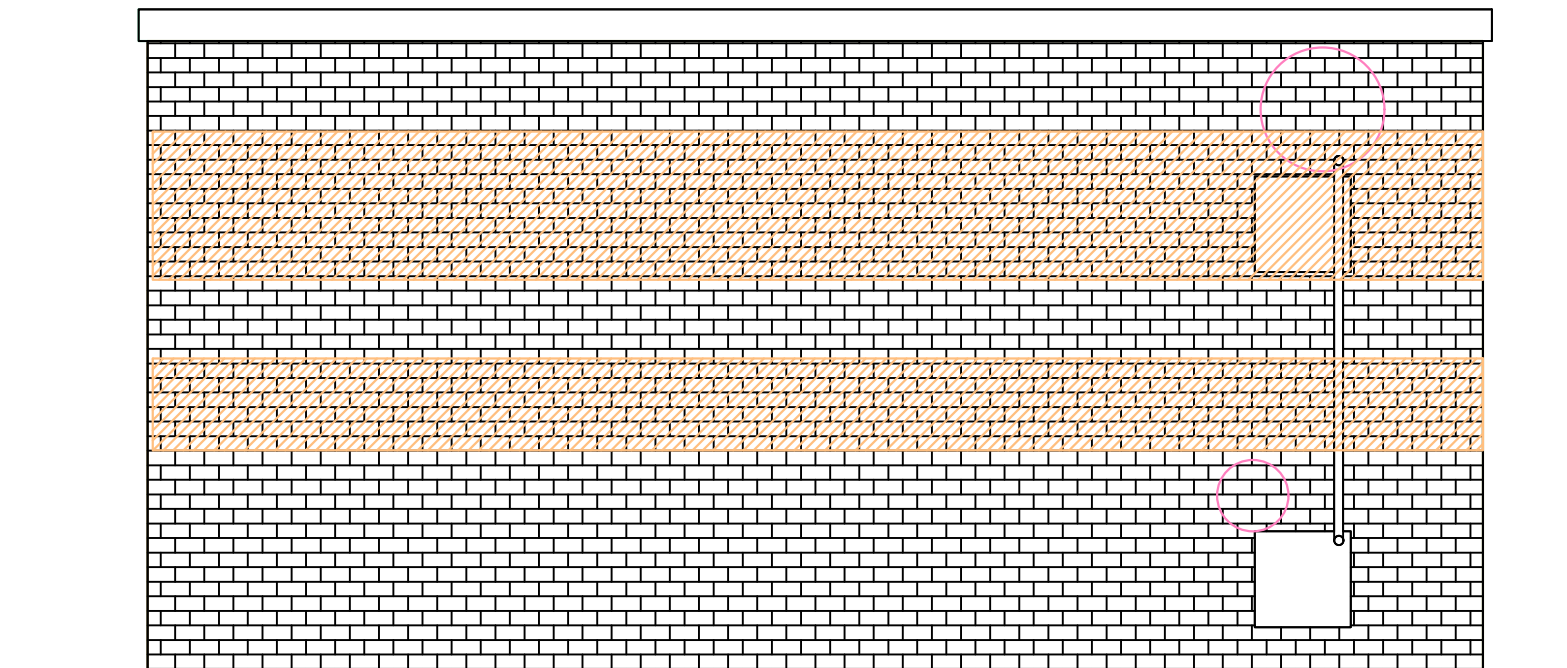
IRC #:	25049
W.O.#:	NB22-003SP
SCALE:	NTS
DATE:	4 MARS 2022

NORTH:	DRN.:	M.M
	CHK.:	D.G.
	DWG.#:	REV.#:
	E1	

NORTH ELEVATION



SOUTH ELEVATION



PEN COLOR CODE: C1-0.10 C2-0.20 C3-0.30 C4-0.40 C5-0.50 C6-0.10 C7-0.15

LEGEND:

-  CRACKED BRICK
-  STEP CRACKS
-  CRACKS AT LENTEL

-  MORTAR LOSS
-  VEGETATION GROWTH

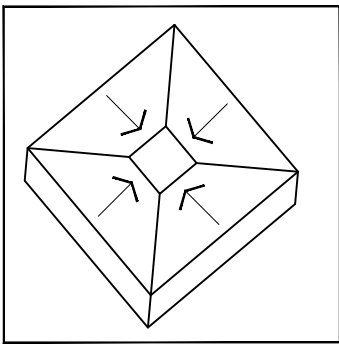
irc Building Sciences Group
 A Rimkus Company
 69 MAPLE AVENUE
 NEW GLASGOW, NOVA SCOTIA, B2H 2B3
 TEL: 902.695.5549
 1.888.607.5245 WWW.IRCGROUP.COM

TITLE:	NORTH AND SOUTH ELEVATION
CLIENT:	CITY OF SAINT JOHN
PROJECT:	EASTERN WASTE WATER TREATMENT FACILITY SAINT JOHN, NEW BRUNSWICK

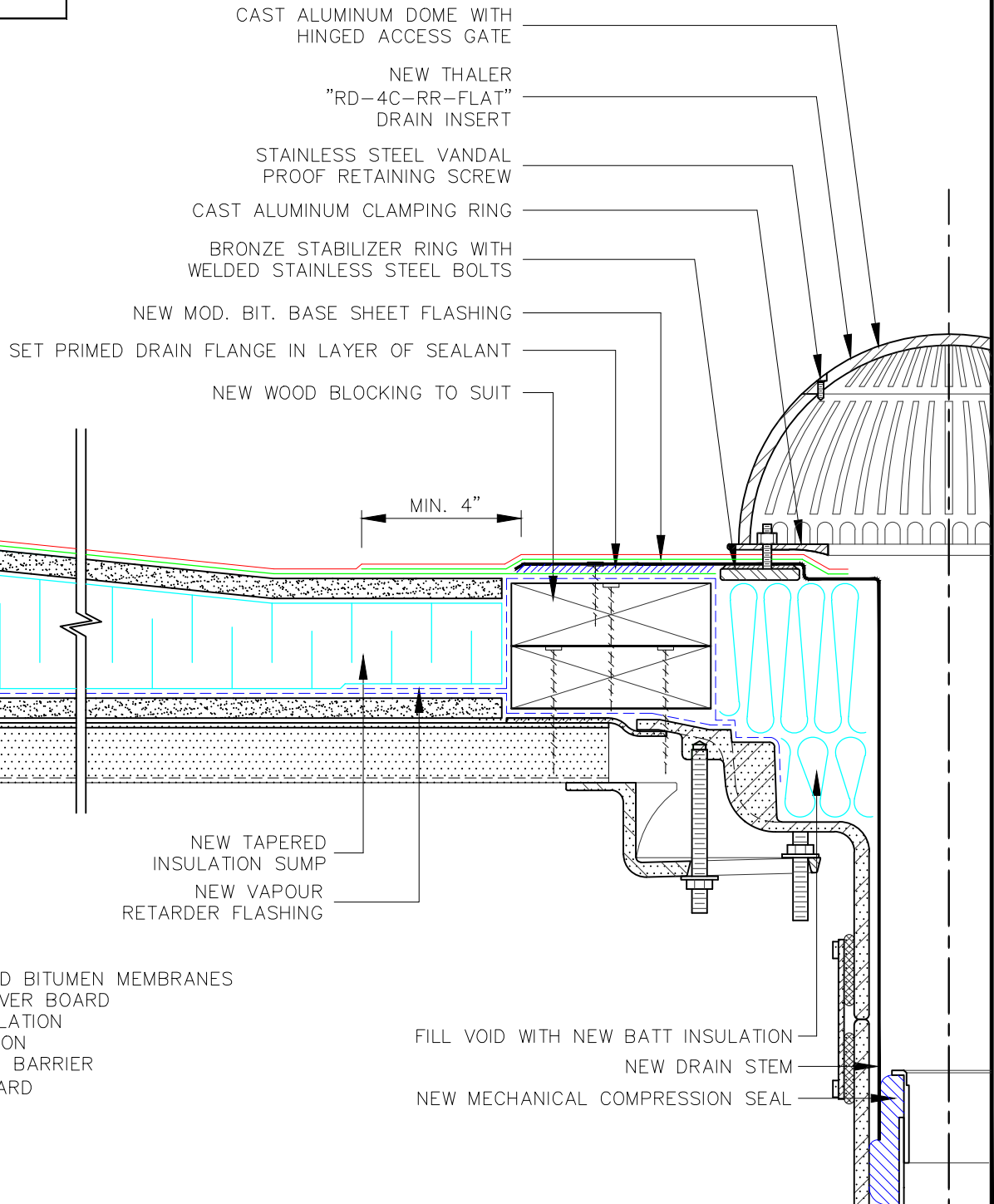
IRC #	25047
W.O.#	NB22-003SP
SCALE:	NTS
DATE:	4 MARS 2022

NORTH:	DRN.:	M.M.
	CHK.:	D.G.
	DWG.#:	REV.#:
	E2	

M:\Projects\25001-25050\25049_Eastern Waste Water Treatment Facility, Saint John, NB\NR22-003SP\04_CAD\02_Working\DWG(1)218-RR-MD-DD-ISO-ISO-DD_Retro.dwg



SUMP DIAGRAM



TITLE:

RETRO DRAIN FLASHING DETAIL

REVISED:

SCALE: 3" = 1'-0"

REV'N.#:

DATE: 14 MAR. 2022

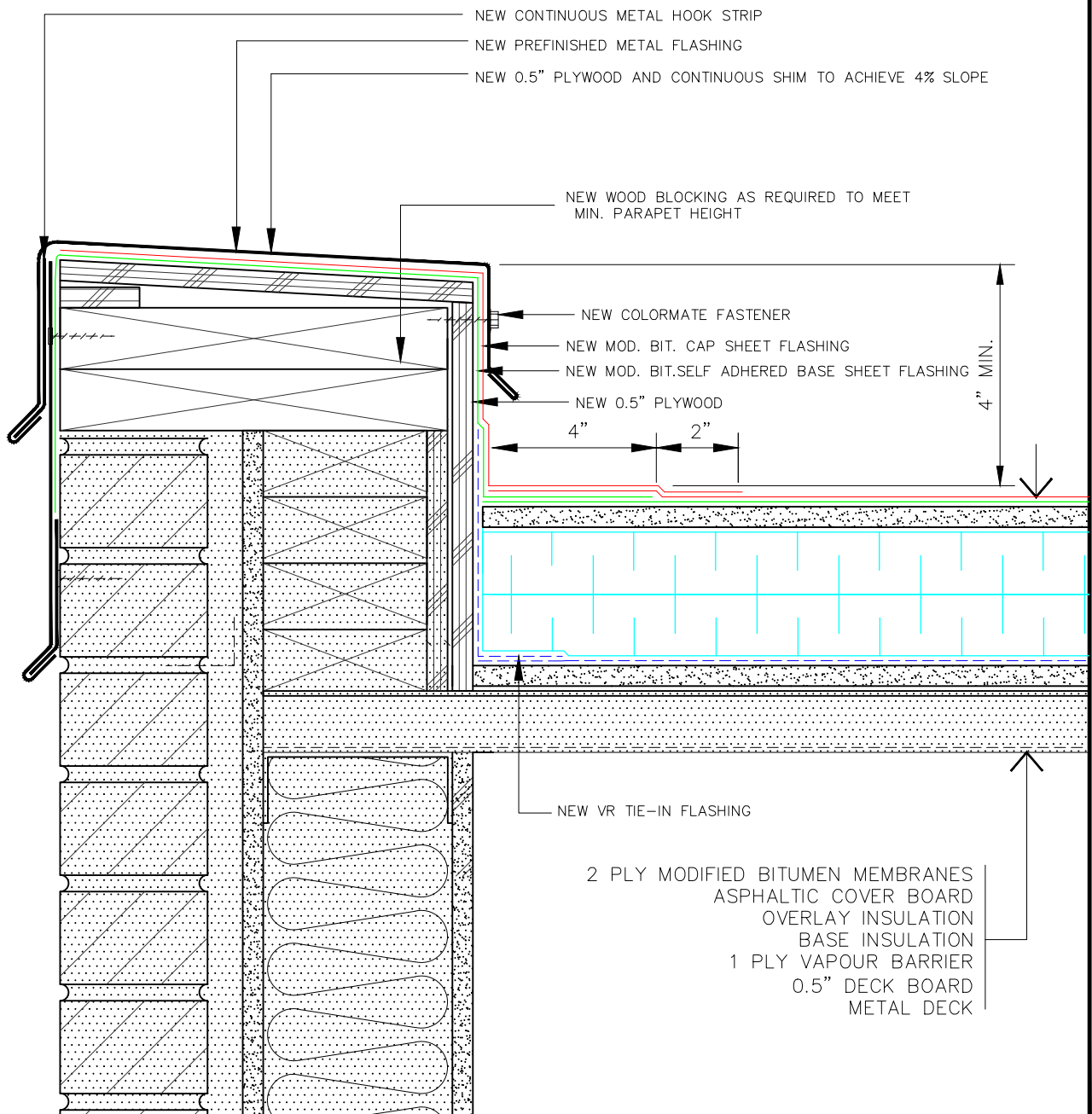
NOTE: NO REPRODUCTION OR USE OF THIS DRAWING IS AUTHORIZED WITHOUT EXPRESSED WRITTEN CONSENT
© COPYRIGHT 2022 IRC BUILDING SCIENCES GROUP INC.

DRN. BY: M.M.

DWG.#:

DMM218

CHK. BY: V.A.



TITLE: PERIMETER FLASHING DETAIL

REVISED:

SCALE: 3" = 1'-0"

REV'N.#:

DATE: 9 MARCH 2022

NOTE: NO REPRODUCTION OR USE OF THIS DRAWING IS AUTHORIZED WITHOUT EXPRESSED WRITTEN CONSENT
 ©COPYRIGHT 2022 IRC BUILDING SCIENCES GROUP INC.

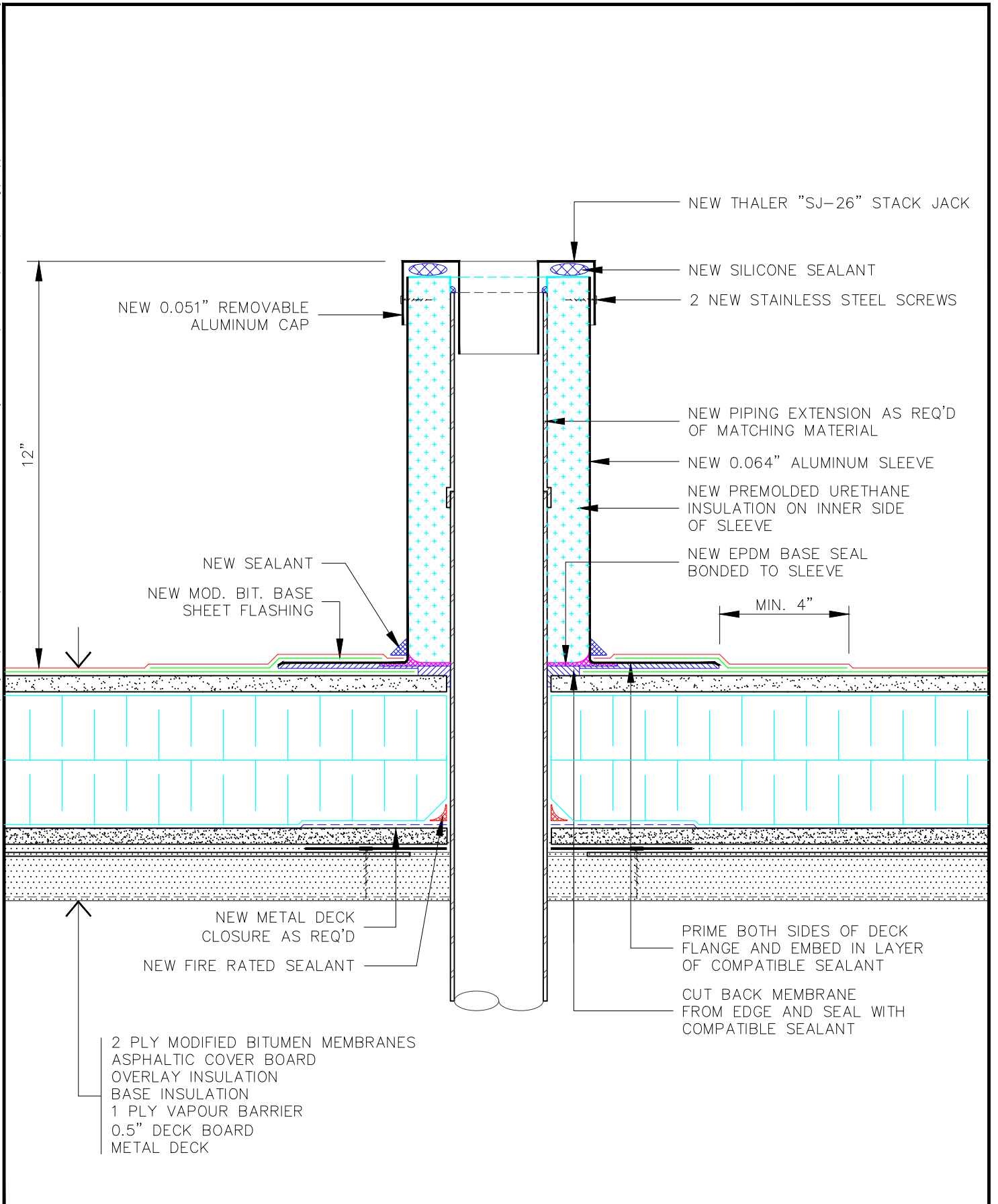
DRN. BY: M.M./V.A.


DWG.#:

PMM430

CHK. BY: V.A.

M:_Projects\25001-25050\25049_Eastern Waste Water Treatment Facility, Saint John, NB\W22-003SP\04_CAD\02_Working\SMM\1817-RR-MD-ISO-SD-DD-PSTACK.dwg



	TITLE: PLUMBING STACK DETAIL	REVISED:	SCALE: 3" = 1'-0"
	NOTE: NO REPRODUCTION OR USE OF THIS DRAWING IS AUTHORIZED WITHOUT EXPRESSED WRITTEN CONSENT © COPYRIGHT 2019 IRC BUILDING SCIENCES GROUP INC.	REV'N.#:	DATE: 14 MAR. 2022
		DRN. BY: M.M..	DWG.#: SMM817
		CHK. BY: V.A.	