

M:\PROJECTS\25001-25050\25047_FIRE STATION 1, 45 LEINSTER STREET, SAINT JOHN, NB.CITY OF SAINT JOHN\NR22-001SP\04_CAD\02_WORKING\IRC-25047-NR22-001SP_FIRE STATION#1_45 LEINSTER STREET.DWG

EXISTING ROOF COMPOSITION(S):

ROOF AREA 1.1

METAL DECK
 1 PLY KRAFT PAPER
 3.0" POLYISOCYANURATE INSULATION
 0.5" HD FIBRE BOARD
 1 PLY MODIFIED BITUMEN BASE SHEET
 1 PLY MODIFIED BITUMEN CAP SHEET

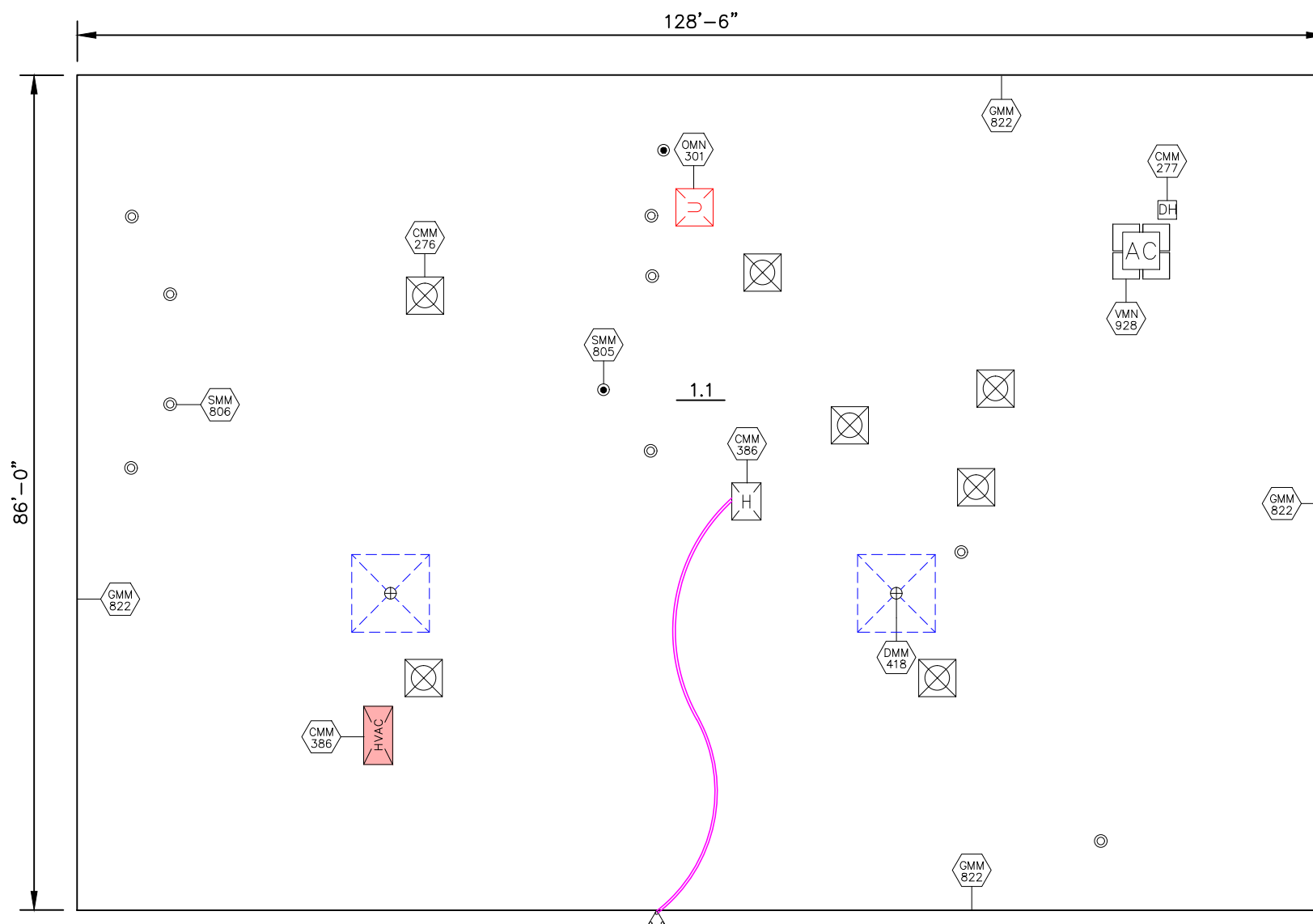
NEW ROOF COMPOSITION(S):

ROOF AREA 1.1

EXISTING METAL DECK
 EXISTING 1 PLY KRAFT PAPER
 EXISTING 3.0" POLYISOCYANURATE INSULATION
 EXISTING 0.5" HD FIBRE BOARD
 EXISTING 2 PLY MODIFIED BITUMEN MEMBRANES
 NEW 1 PLY MODIFIED BITUMEN CAP SHEET

ROOF AREA (SQ. FT.)

1.1 - 11,094
 TOTAL = 11,094



LEGEND

ROOF PROJECTIONS:

- | | |
|--|----------------------------------|
| | HVAC UNIT ON SLEEPERS |
| | LADDER |
| | LIGHT POST |
| | CHANGE IN ELEV. |
| | PIPE SUPPORT |
| | CHIMNEY |
| | PITCH POCKET |
| | CONDUIT LINE |
| | PLUMBING OR SOIL STACK |
| | CONTROL JOINT |
| | RA ROOF ANCHOR |
| | DRAIN |
| | SATELLITE DISH |
| | EXHAUST FAN ON CURB |
| | SCUPPER |
| | EXPANSION JOINT |
| | SECURITY CAMERA |
| | EXPLOSION HATCH |
| | SKYLIGHT |
| | FLAGPOLE |
| | SLOPE |
| | GAS PIPELINE |
| | SQUARE VENT |
| | GOOSENECK VENT |
| | SQUARE VENT ON OVERSIZED CURB |
| | GOOSENECK VENT ON OVERSIZED CURB |
| | TALLCONE OR "B" VENT |
| | HATCH |
| | TALLCONE OR "B" VENT ON CURB |
| | HVAC UNIT |
| | UNUSED OPENING |
| | HVAC UNIT ON CURB |
| | WALKWAY PADS |

DRAINAGE:

- | | | | |
|--|-----------------------------|--|--------------------------------|
| | TAPERED INSULATION LAYOUT | | NEW ROOF DRAIN TO BE INSTALLED |
| | DIRECTION OF WATER DRAINAGE | | INSULATION SUMP |
| | 4.5" TOTAL INSUL. THICKNESS | | INSULATION CRICKET |

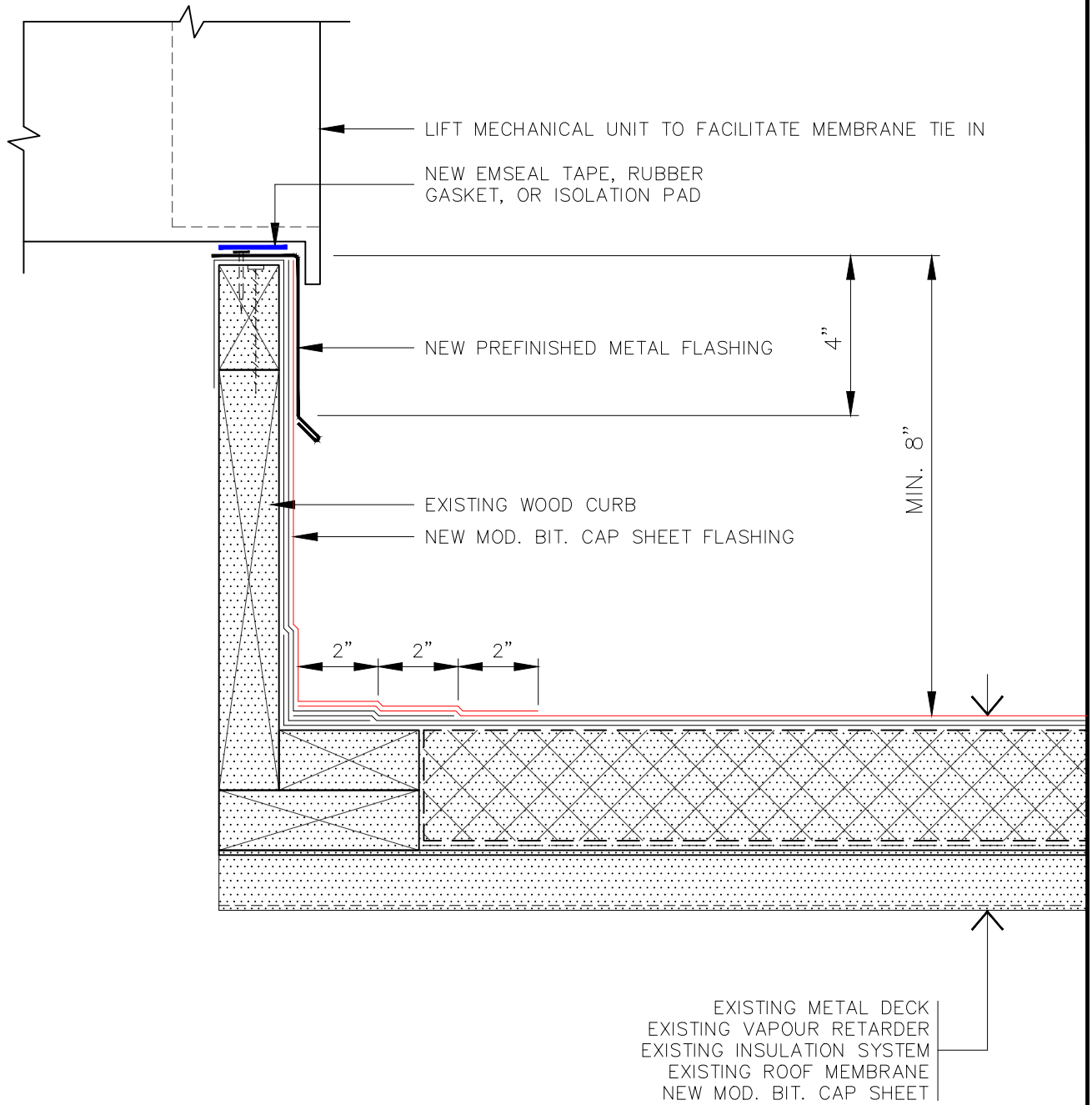
NOTE: CONTRACTOR RESPONSIBLE FOR VERIFICATION OF ALL DIMENSIONS AND MEASUREMENTS TO OWN SATISFACTION. © 2022 BY IRC GROUP INC.

irc **IRC Building Sciences Group**
 A Rimkus Company
 69 MAPLE AVENUE
 NEW GLASGOW, NOVA SCOTIA, B2H 2B3
 TEL: 902.695.5549 WWW.IRCGROUP.COM

TITLE: ROOF PLAN
 CLIENT: FIRE STATION #1
 PROJECT: 45 LEINSTER ST
 SAINT JOHN, NB

IRC #:	25047	PROJECT NORTH:	
W.O.#:	NR22-001SP	(TRUE NORTH)	
SCALE:	1/16" = 1'-0"		
DATE:	MAR. 18/22		
DRN. BY:	M.M	DWG.#:	
CHK. BY:	V.A		R1

M:_Projects\25001-25050\25047_Fire Station 1, 45 Leinster Street, Saint John, NB_City of Saint John\NR22-001SP\04-CAD\02_Working\CMM(2)276-RF-MD-DD-GEN-CAP_Wood_where units can be lifted.dwg



EXISTING METAL DECK
 EXISTING VAPOUR RETARDER
 EXISTING INSULATION SYSTEM
 EXISTING ROOF MEMBRANE
 NEW MOD. BIT. CAP SHEET



TITLE: BUILT-UP CURB DETAIL

NO REPRODUCTION OR USE OF THIS DRAWING IS AUTHORIZED WITHOUT EXPRESSED WRITTEN CONSENT
 © 2022 IRC BUILDING SCIENCES GROUP, A RIMKUS COMPANY

REVISED:

REV'N.#:

DRN. BY: V.A.

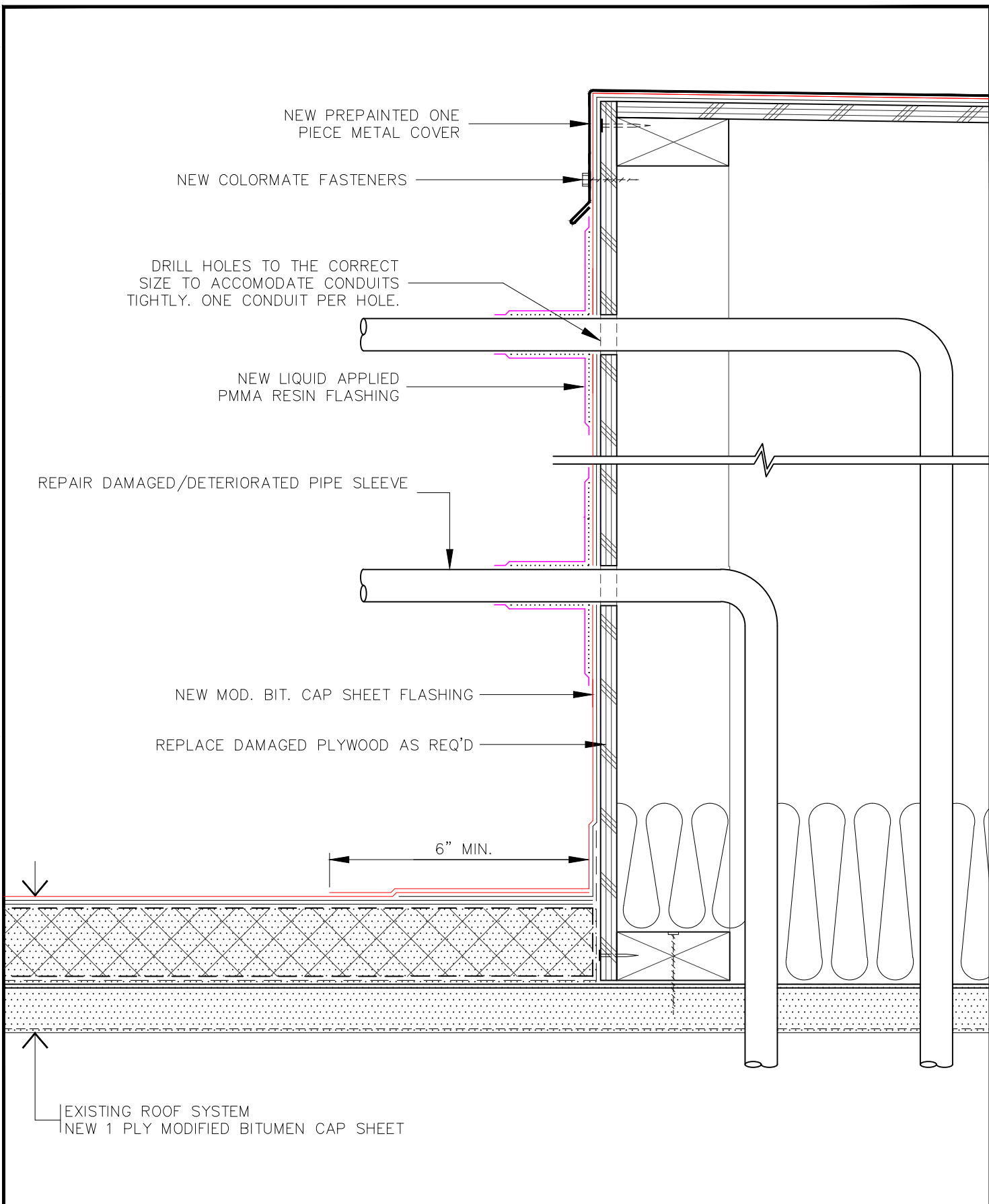
CHK. BY: A.J.D./M.A.M.


SCALE: 3" = 1'-0"

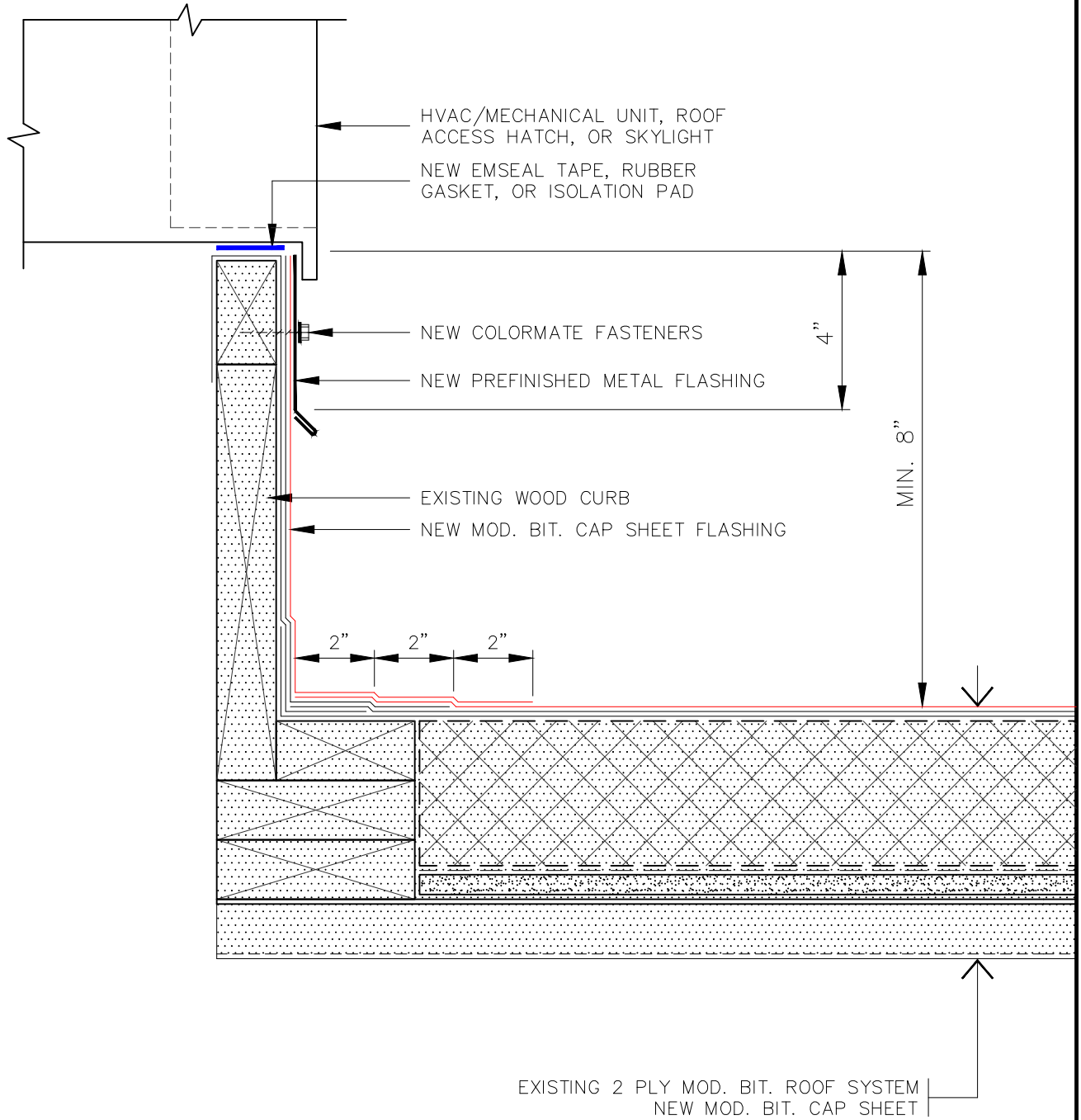
DATE: 17 MAR. 2022

DWG.#: CMM276

M:_Projects\25001-25050\25047_Fire Station 1_45 Leinster Street, Saint John, NB_City of Saint John\NR22-001\SP\04_CAD\02_Working\CMM(2)277-RF-MD-GEN-CAP_Doghouse.dwg



	TITLE:	NEW DOGHOUSE DETAIL	REVISED:	SCALE: 3" = 1'-0"
			REV'N.#:	DATE: 17 MAR. 2022
	NOTE: NO REPRODUCTION OR USE OF THIS DRAWING IS AUTHORIZED WITHOUT EXPRESSED WRITTEN CONSENT © 2022 IRC BUILDING SCIENCES GROUP, A RIMKUS COMPANY		DRN. BY: T.K.C./V.A.	DWG.#: CMM277
			CHK. BY: A.J.D./M.A.M.	



TITLE: BUILT-UP CURB DETAIL

NO REPRODUCTION OR USE OF THIS DRAWING IS AUTHORIZED WITHOUT EXPRESSED WRITTEN CONSENT
© 2022 IRC BUILDING SCIENCES GROUP, A RIMKUS COMPANY

REVISED:

REV'N.#:

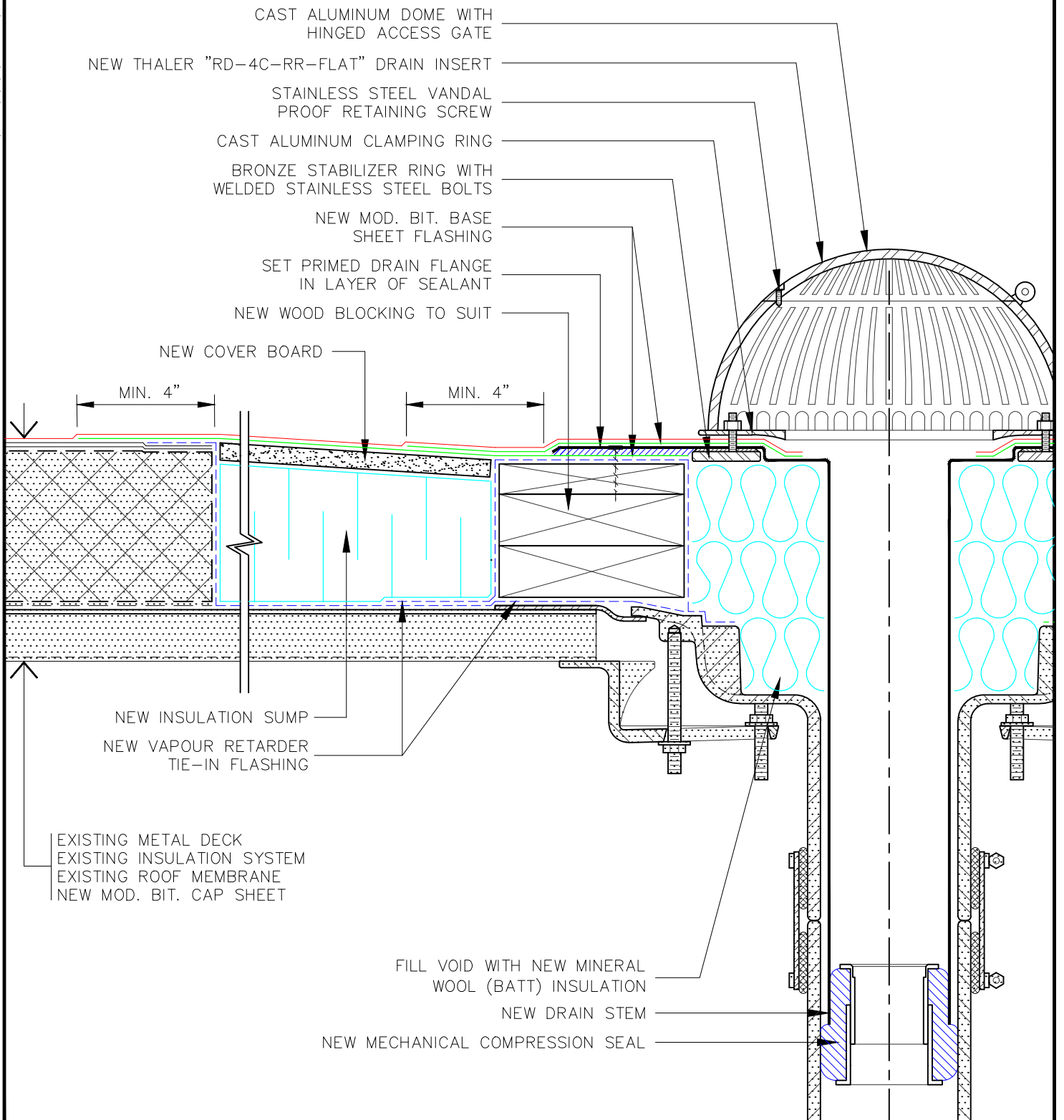
DRN. BY: J.L./V.A.

CHK. BY: A.J.D./M.A.M.

SCALE: 3" = 1'-0"

DATE: 17 MAR. 2022

DWG.#: CMM386



CAST ALUMINUM DOME WITH
HINGED ACCESS GATE

NEW THALER "RD-4C-RR-FLAT" DRAIN INSERT

STAINLESS STEEL VANDAL
PROOF RETAINING SCREW

CAST ALUMINUM CLAMPING RING

BRONZE STABILIZER RING WITH
WELDED STAINLESS STEEL BOLTS

NEW MOD. BIT. BASE
SHEET FLASHING

SET PRIMED DRAIN FLANGE
IN LAYER OF SEALANT

NEW WOOD BLOCKING TO SUIT

NEW COVER BOARD

MIN. 4"

MIN. 4"

NEW INSULATION SUMP

NEW VAPOUR RETARDER
TIE-IN FLASHING

EXISTING METAL DECK

EXISTING INSULATION SYSTEM

EXISTING ROOF MEMBRANE

NEW MOD. BIT. CAP SHEET

FILL VOID WITH NEW MINERAL
WOOL (BATT) INSULATION

NEW DRAIN STEM

NEW MECHANICAL COMPRESSION SEAL



TITLE: RETRO DRAIN
FLASHING DETAIL

REVISED:

REV'N.#:

DRN. BY: F.R.A./G.C.

CHK. BY: A.J.D./M.A.M.

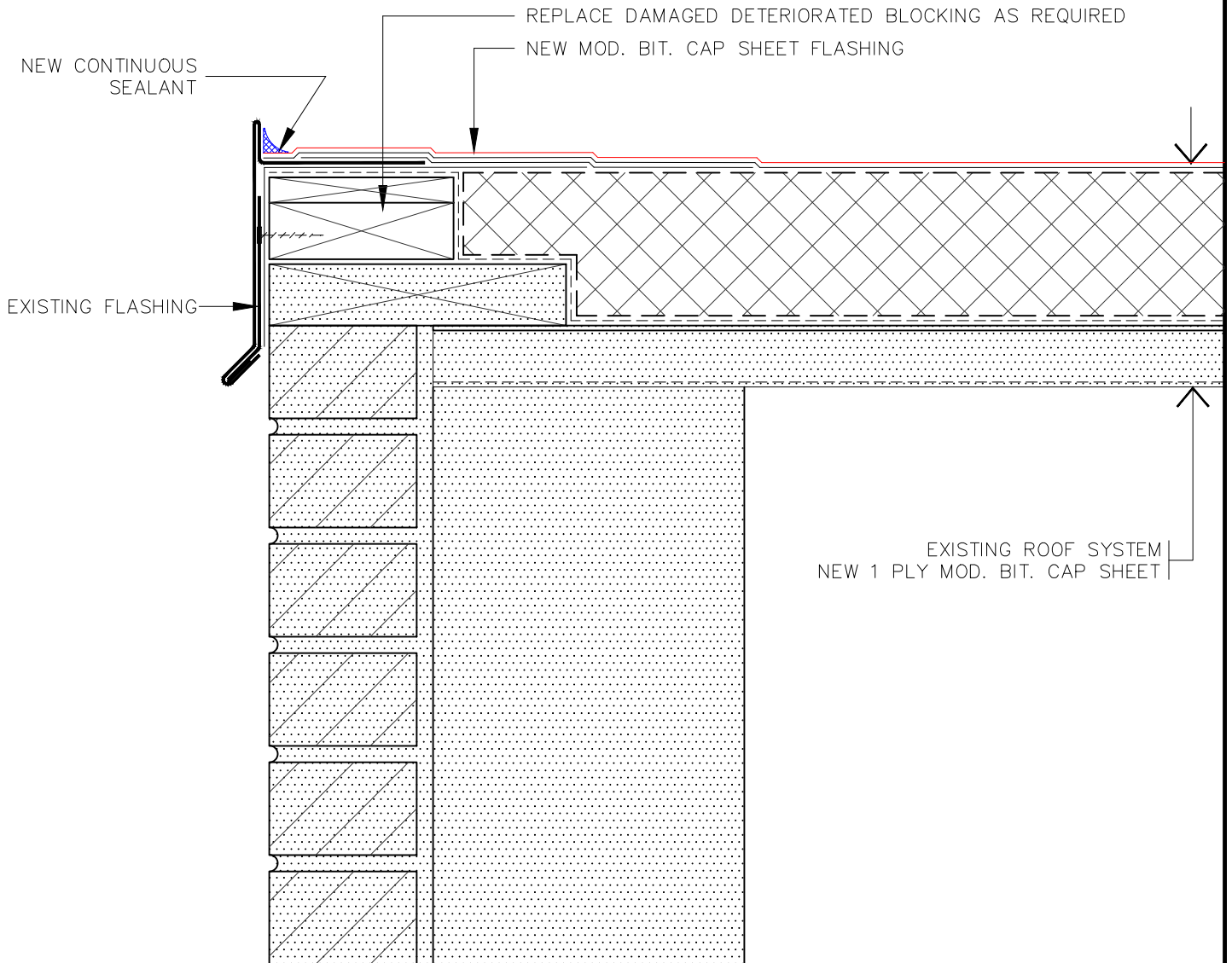
SCALE: 3" = 1'-0"

DATE: 17 MAR. 2022

DWG.#: DMM418

NOTE: NO REPRODUCTION OR USE OF THIS DRAWING IS
AUTHORIZED WITHOUT EXPRESSED WRITTEN CONSENT
© COPYRIGHT 2020 IRC BUILDING SCIENCES GROUP INC.

M:_Projectz\25001-25050\35047_Fire Station 1, 45 Leinster Street, Saint John, NB_City of Saint John\NR22-001SP\04_CAD\02_Working\GMM822-RR-MD-VR-ISO-ISO-MD-VR-ISO-XBD-Brick.dwg



EXISTING ROOF SYSTEM
NEW 1 PLY MOD. BIT. CAP SHEET



TITLE: PERIMETER FLASHING DETAIL

NOTE: NO REPRODUCTION OR USE OF THIS DRAWING IS AUTHORIZED WITHOUT EXPRESSED WRITTEN CONSENT
© 2022 IRC BUILDING SCIENCES GROUP, A RIMKUS COMPANY

REVISED:

REV'N.#:

DRN. BY: G.C./V.A.

CHK. BY: T.K.C.

SCALE: 3" = 1'-0"

DATE: 18 MAR. 2022

DWG.#:

GMM822

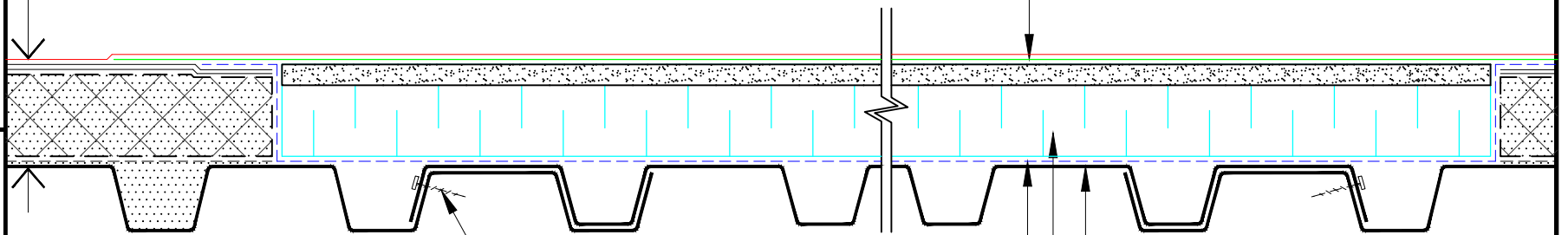


NOTES:

1. FRAME PERIMETER OF DECK OPENING WITH NEW STRUCTURAL STEEL ANGLE LENGTH TO SUIT
2. OPENINGS LESS THAN 18" IN DIAMETER MAY BE OVERLAID WITH 18 GA. GALV. METAL PLATE IN LIEU OF NEW DECKING.

NEW MOD. BIT. CAP SHEET
 EXISTING 2 PLY MOD. BIT. MEMBRANE
 EXISTING INSULATION SYSTEM
 EXISTING VAPOUR RETARDER
 EXISTING METAL DECK

NEW MOD. BIT. BASE SHEET FLASHING



SELF TAPPING STAINLESS SCREW
 NEW MOD. BIT. VAPOUR RETARDER TIE-IN
 NEW RIGID INSULATION FILLER HEIGHT TO SUIT EXISTING ASSUMBLY
 NEW 22GA. GALV. METAL DECKING TO MATCH EXISTING DECKING

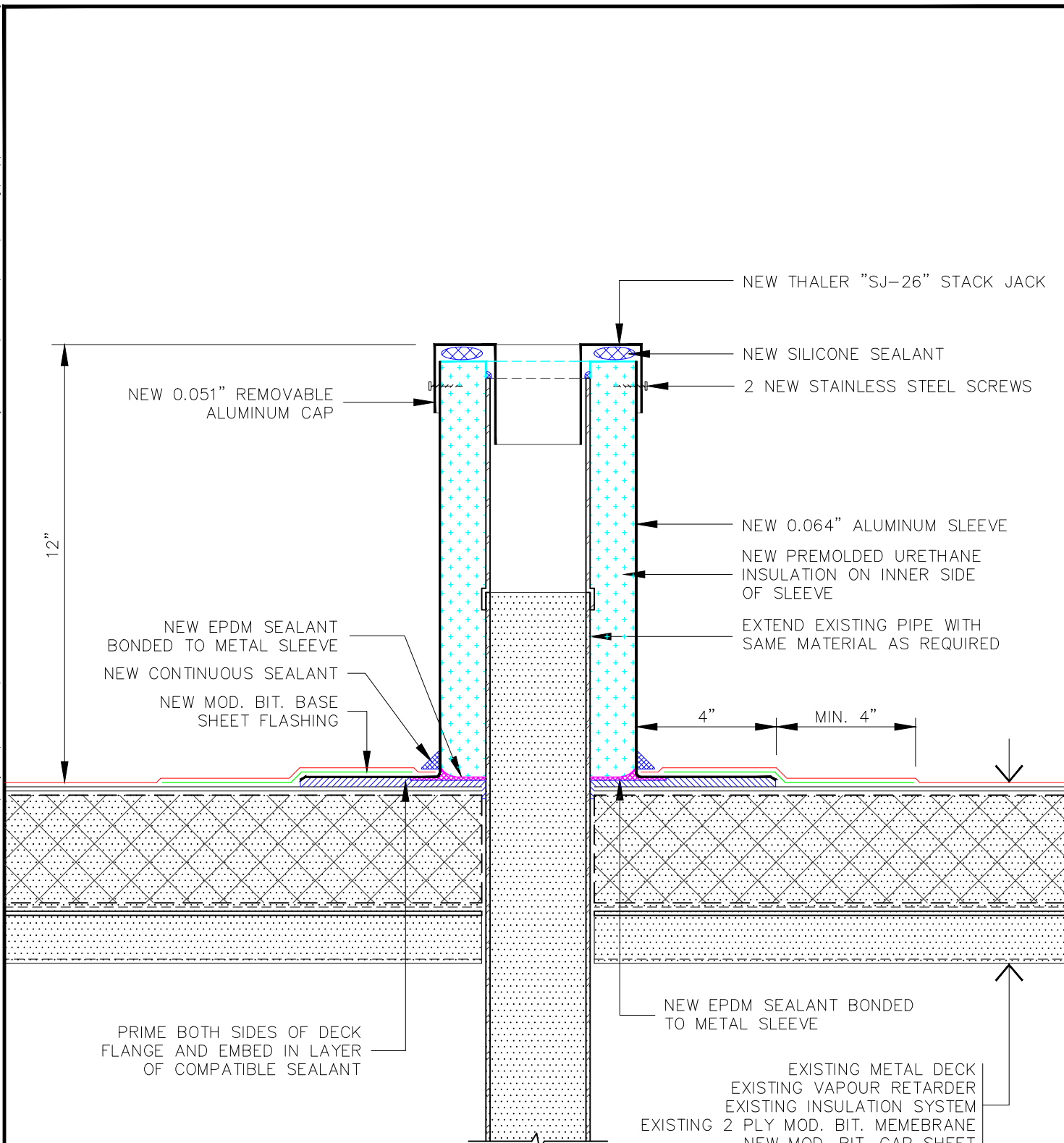
TITLE:
DECK CLOSURE DETAIL

NOTE:
 NO REPRODUCTION OR USE OF THIS DRAWING IS AUTHORIZED WITHOUT EXPRESSED WRITTEN CONSENT © COPYRIGHT 2014 IRC BUILDING SCIENCES GROUP INC.

REVISED:
 REV'N #:
 DRN. BY: T.K.C./V.A.
 CHK. BY: A.J.D.

SCALE: 3" = 1'-0"
 DATE: 18 MAR. 2022
 DWG.#: OMN301

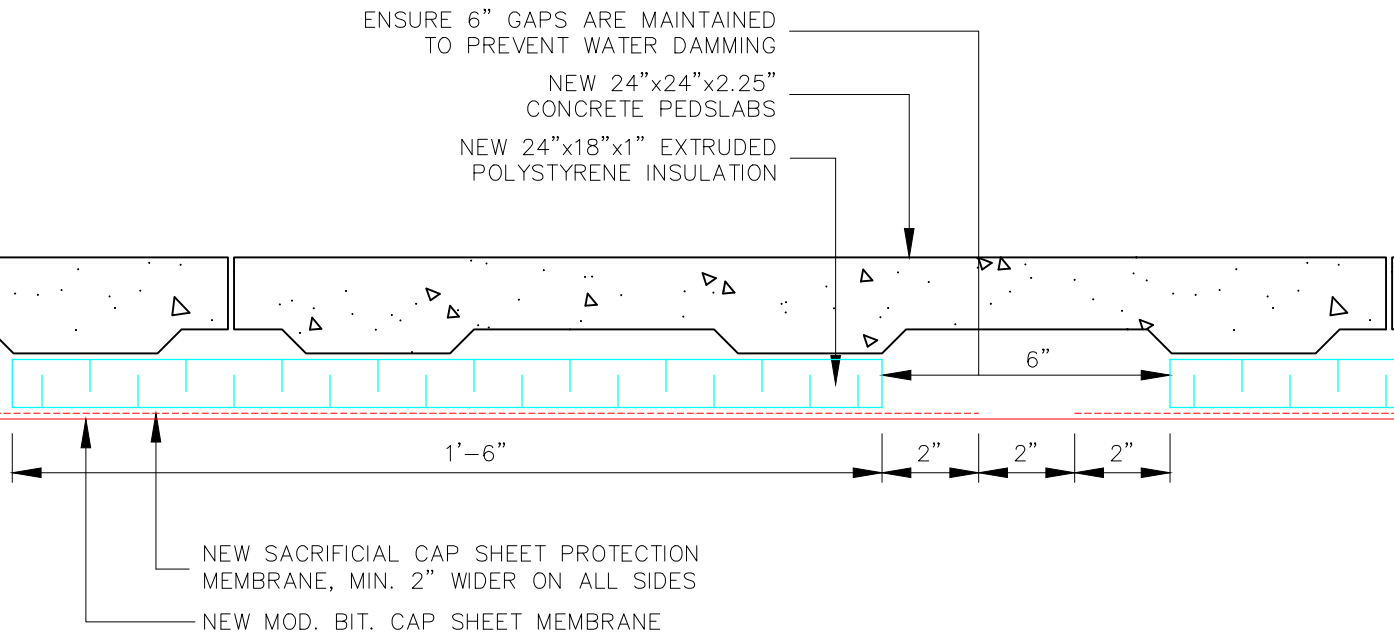
Mt. Projects2\25001-25050\25047_Fire Station 1, 45 Leinster Street, Saint John, NB_City of Saint John\NR22-001SP\04_CAD\02_Working\SMM(2)805-RF-MD-GEN-CAP_SJ-26.dwg



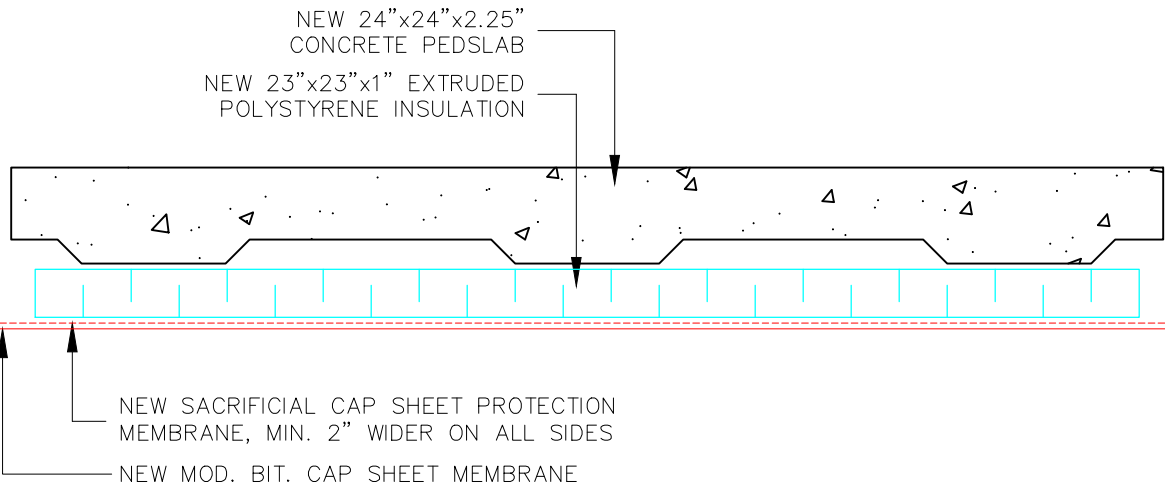
	TITLE: PLUMBING STACK DETAIL	REVISED:	SCALE: 3" = 1'-0"
	NOTE: NO REPRODUCTION OR USE OF THIS DRAWING IS AUTHORIZED WITHOUT EXPRESSED WRITTEN CONSENT © 2022 IRC BUILDING SCIENCES GROUP, A RIMKUS COMPANY	REV'N.#:	DATE: 18 MAR 2022
		DRN. BY: M.M.	DWG.#: SMM805
		CHK. BY: V.A.	

Mt. \Projects\25001-25050\25047_Fire Station 1_45 Leinster Street, Saint John, NB, City of Saint John\NR22-001SP\04_CAD\02_Working\VMN928_Paver Walkway_XBD.dwg

NOTE: SOME ROOFING COMPONENTS OMITTED FOR CLARITY.



PAVER WALKWAY



SINGLE PAVER



TITLE: WALKWAY/PAVER DETAIL

NOTE: NO REPRODUCTION OR USE OF THIS DRAWING IS AUTHORIZED WITHOUT EXPRESSED WRITTEN CONSENT
© 2022 IRC BUILDING SCIENCES GROUP, A RIMKUS COMPANY

REVISED:

REV'N.#:

DRN. BY:

CHK. BY:

M.M.

V.A.

SCALE: 3" = 1'-0"

DATE: 18 MAR 2022

DWG.#:

VMN928