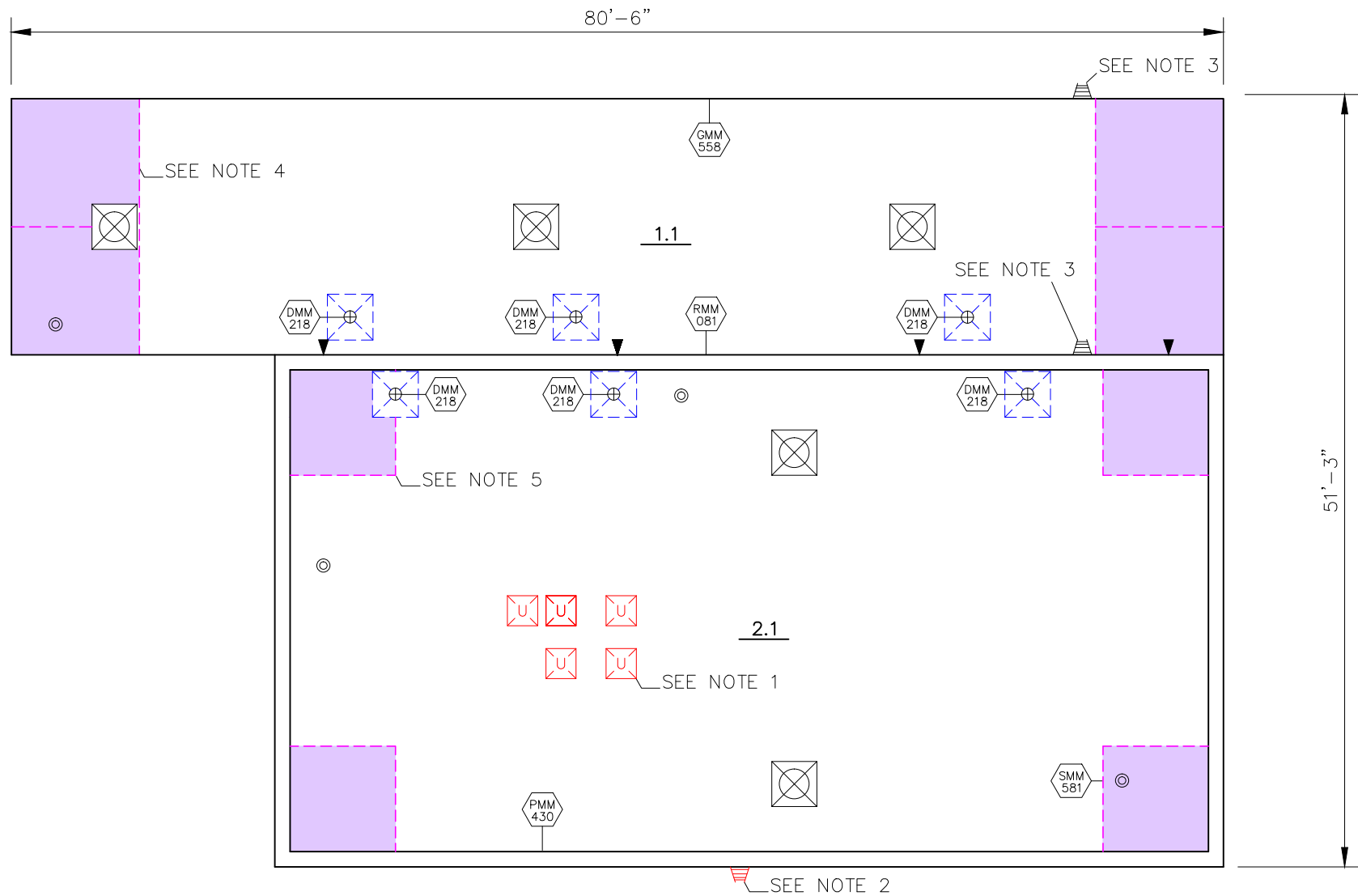


NOTES:

1. SEE SUMMARY OF WORK FOR INFILL OF UNUSED OPENINGS.
2. EXISTING LADDER TO BE REMOVED.
3. NEW LADDER TO BE INSTALLED. CONFIRM LOCATION WITH CLIENT/CONSULTANT.
4. CORNER ROOF COMPOSITIONS OF ROOF 1.1 TO BE 8'-6" x 8'-6".
5. CORNER ROOF COMPOSITIONS OF ROOF 2.1 TO BE 7' x 7'.



ROOF AREAS (SQ.FT.)

1.1 - 1,369

2.1 - 2,142

TOTAL = 3,511

EXISTING ROOF COMPOSTION(S)

ROOF AREA 1.1
 CONCRETE DECK
 2 PLY FELTS
 2" POLY. ISO. INSULATION
 1/2" FIBERBOARD
 BASE SHEET
 CAP SHEET

ROOF AREA 2.1
 CONCRETE DECK
 2 PLY FELTS
 1.25" FIBERGLASS INSULATION
 4 PLY FELTS
 PEA GRAVEL

NEW ROOF COMPOSTION(S)

ROOF AREAS 1.1 & 2.1
 EXISTING CONCRETE DECK
 EXISTING 2 PLY FELTS
 NEW 1 PLY SELF ADHERED VAPOUR BARRIER
 NEW 2" POLY. ISO. INSULATION
 1/4" 2-1 SOPRASMART BOARD WITH LAMINATED BASE SHEET
 MODIFIED BITUMEN CAP SHEET

CORNER ROOF AREAS 1.1 & 1.2 (AS OUTLINED ON DRAWINGS)
 EXISTING CONCRETE DECK
 EXISTING 2 PLY FELTS
 NEW 1 PLY SELF ADHERED VAPOUR BARRIER
 2" POLY. ISO. INSULATION
 3/16" SOPRABOARD
 MODIFIED BITUMEN BASE SHEET
 MODIFIED BITUMEN CAP SHEET

LEGEND

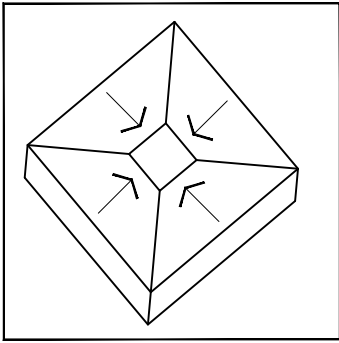
	DEFINED AREAS OF CORNER ROOF COMPOSITIONS		
ROOF PROJECTIONS:			
	ANTENNA		HVAC UNIT ON SLEEPERS
	BREATHER		NEW LADDER TO BE INSTALLED
	CAPPED OFF/ABANDONED STACK		LIGHT POST
	CHANGE IN ELEV.		PIPE SUPPORT
	CHIMNEY		PITCH POCKET
	CONDUIT LINE		PLUMBING OR SOIL STACK
	CONTROL JOINT		ROOF ANCHOR
	DRAIN		SATELLITE DISH
	EXHAUST FAN ON CURB		SCUPPER
	EXPANSION JOINT		SECURITY CAMERA
	EXPLOSION HATCH		SKYLIGHT
	FLAGPOLE		SLOPE
	GAS PIPELINE		SQUARE VENT
	GOOSENECK VENT		SQUARE VENT ON OVERSIZED CURB
	GOOSENECK VENT ON OVERSIZED CURB		TALLCONE OR "B" VENT
	HATCH		TALLCONE OR "B" VENT ON CURB
	HVAC UNIT		UNUSED OPENING
	HVAC UNIT ON CURB		WALKWAY PADS
DRAINAGE:			
	TAPERED INSULATION LAYOUT		NEW ROOF DRAIN TO BE INSTALLED
	DIRECTION OF WATER DRAINAGE		INSULATION SUMP
	4.5" TOTAL INSUL. THICKNESS		INSULATION CRICKET

NOTE: CONTRACTOR RESPONSIBLE FOR VERIFICATION OF ALL DIMENSIONS AND MEASUREMENTS TO OWN SATISFACTION. © 2022 BY IRC GROUP INC.

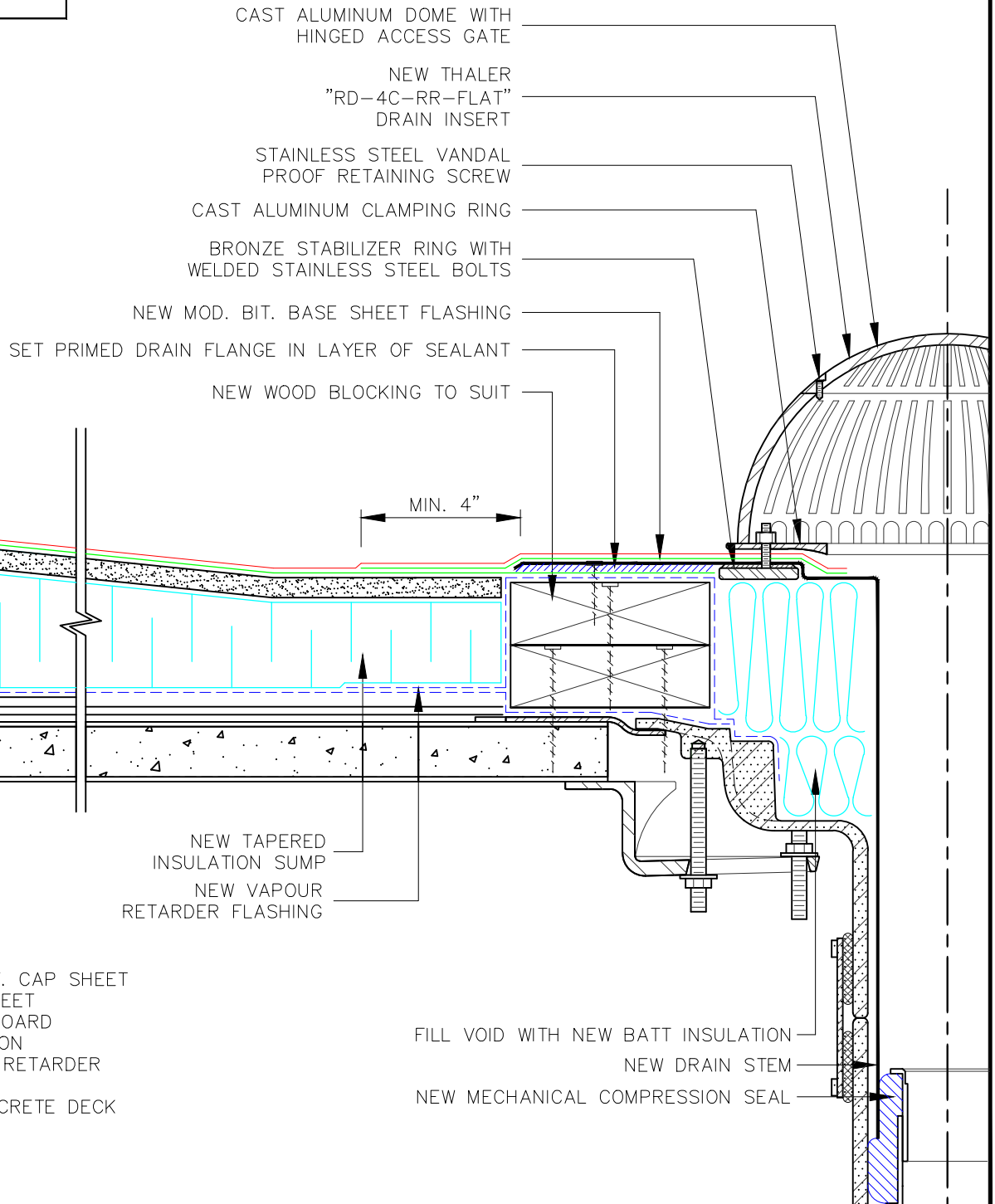
irc **IRC Building Sciences Group**
 A Rimkus Company
 69 MAPLE AVENUE
 NEW GLASGOW, NOVA SCOTIA, B2H 2B3
 TEL: 902.695.5549 WWW.IRCGROUP.COM

TITLE: ROOF PLAN	
CLIENT: CITY OF SAINT JOHN	
PROJECT: SPRUCE LAKE PUMPING STATION	
IRC #: 25048	PROJECT NORTH: (TRUE NORTH)
W.O.#: NR22-002SP	
SCALE: 3/32" = 1'-0"	DWG.#: R1
DATE: MAR. 22/22	
DRN. BY: A.R.	
CHK. BY: V.A./K.K.	

M:\Projects\25001-25050\25048_Spruce Lake Pumping Station_Saint John, NB\NR22-002SP\04_CAD\02_Working\DWG\1218-RR-MD-DD-ISO-ISO-DD_Retro.dwg



SUMP DIAGRAM



TITLE: **RETRO DRAIN FLASHING DETAIL**

NOTE: NO REPRODUCTION OR USE OF THIS DRAWING IS AUTHORIZED WITHOUT EXPRESSED WRITTEN CONSENT
 COPYRIGHT 2022 IRC BUILDING SCIENCES GROUP INC.

REVISED:

REV'N.#:

DRN. BY: **A.R.**

CHK. BY: **M.H./J.C.**

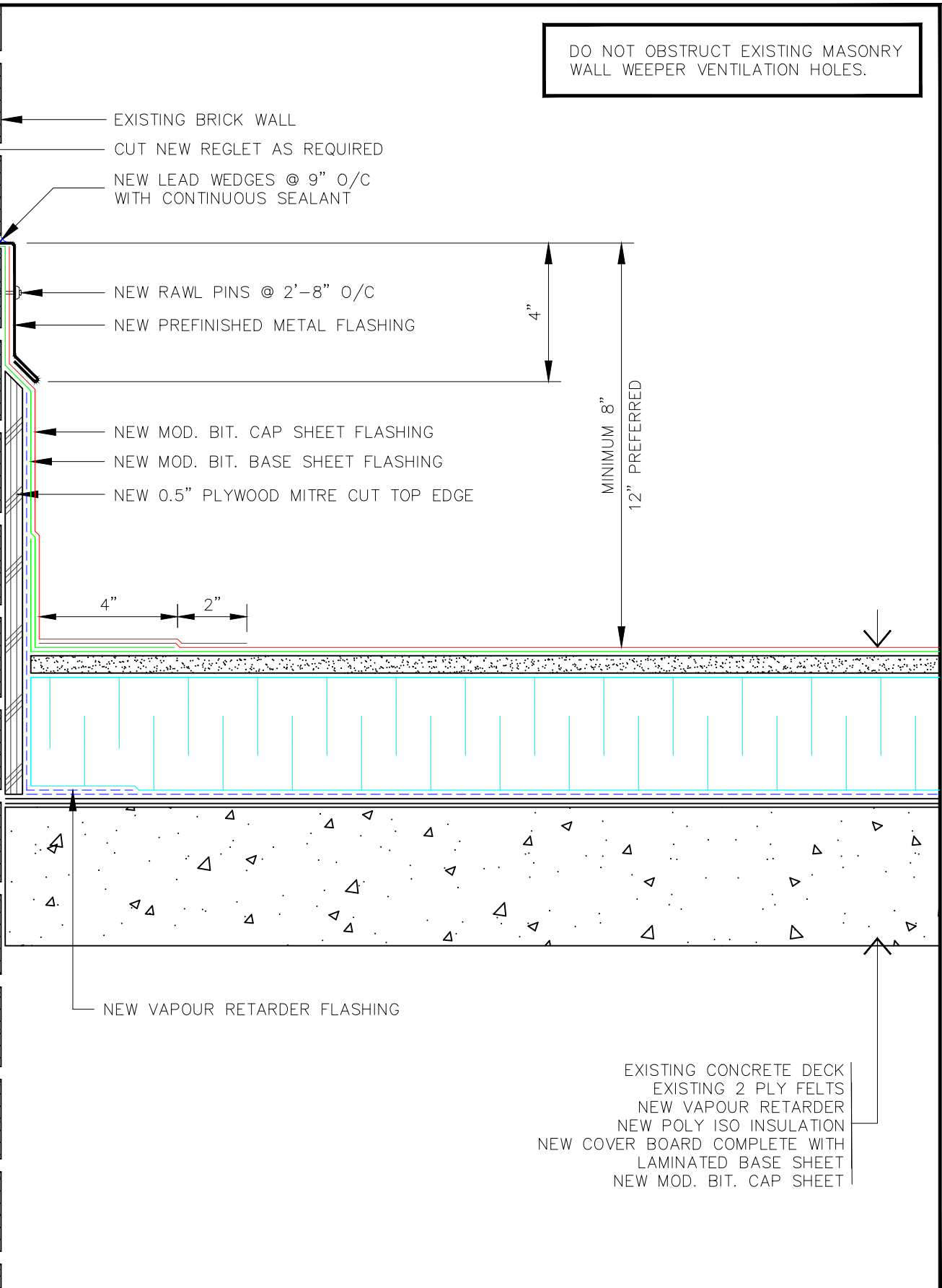
SCALE: **3" = 1'-0"**

DATE: **22 MAR. 2022**

DWG.#: **DMM218**

M:_Projects\25001-25050\25048_Spruce Lake Pumping Station_Saint John_NB\NR22-002SP\04_CAD\02_Working\RMM3\081-RR-CD-ISO-XBD_BrickReglet.dwg

DO NOT OBSTRUCT EXISTING MASONRY WALL WEEPER VENTILATION HOLES.



- EXISTING BRICK WALL
- CUT NEW REGLET AS REQUIRED
- NEW LEAD WEDGES @ 9" O/C WITH CONTINUOUS SEALANT
- NEW RAWL PINS @ 2'-8" O/C
- NEW PREFINISHED METAL FLASHING
- NEW MOD. BIT. CAP SHEET FLASHING
- NEW MOD. BIT. BASE SHEET FLASHING
- NEW 0.5" PLYWOOD MITRE CUT TOP EDGE

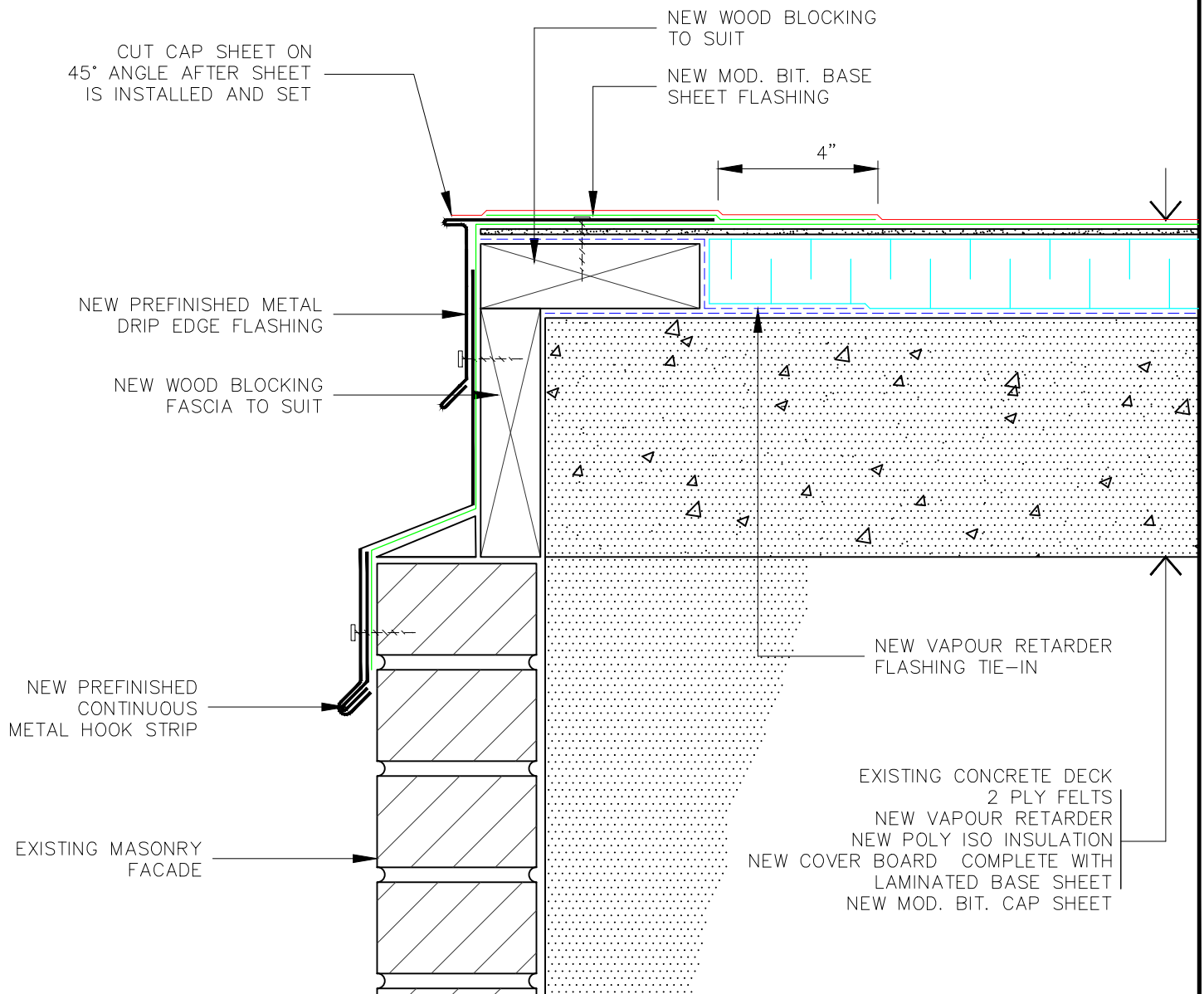
NEW VAPOUR RETARDER FLASHING

EXISTING CONCRETE DECK
 EXISTING 2 PLY FELTS
 NEW VAPOUR RETARDER
 NEW POLY ISO INSULATION
 NEW COVER BOARD COMPLETE WITH LAMINATED BASE SHEET
 NEW MOD. BIT. CAP SHEET



TITLE: REGLET FLASHING DETAIL	REVISED:	SCALE: 3" = 1'-0"
	REV'N.#:	DATE: 22 MAR. 2022
NOTE: NO REPRODUCTION OR USE OF THIS DRAWING IS AUTHORIZED WITHOUT EXPRESSED WRITTEN CONSENT COPYRIGHT 2022 IRC BUILDING SCIENCES GROUP	DRN. BY: E.K.	DWG.#: RMM081
	CHK. BY: M.H./J.C.	

M:_Projects\25001-25050\25048_Spruce Lake Pumping Station, Saint John, NB\IR22-002SP\04_CAD\02_Working\GMM558-RR-CD-ISO-DD_GravelStopEdge.dwg



TITLE: GRAVEL STOP EDGE DETAIL

REVISED:

SCALE: 3" = 1'-0"

REV'N.#:

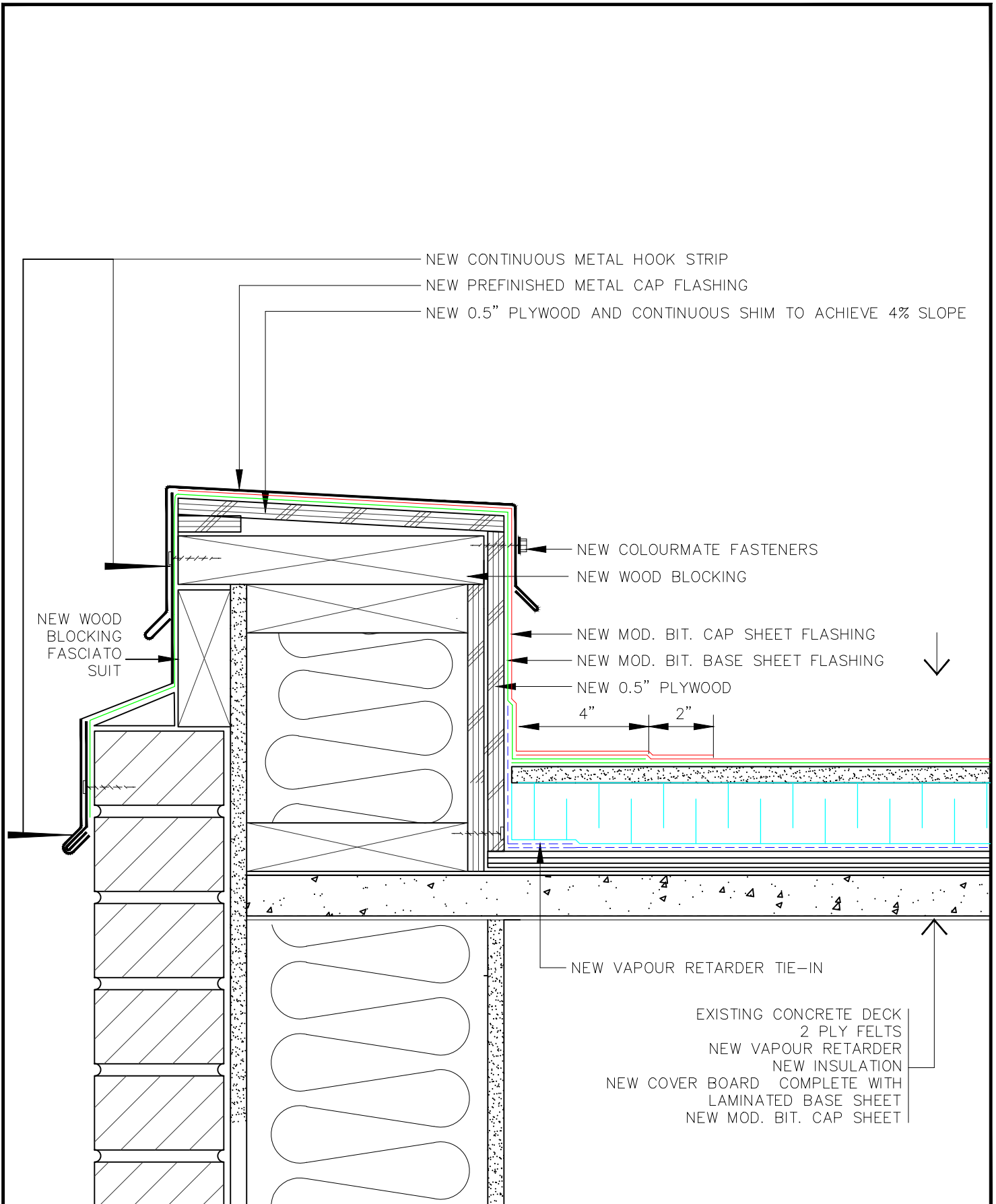
DATE: 22 MAR. 2022

NOTE: NO REPRODUCTION OR USE OF THIS DRAWING IS AUTHORIZED WITHOUT EXPRESSED WRITTEN CONSENT
COPYRIGHT 2022 IRC BUILDING SCIENCES GROUP INC.

DRN. BY: A.R.

DWG.#: GMM558

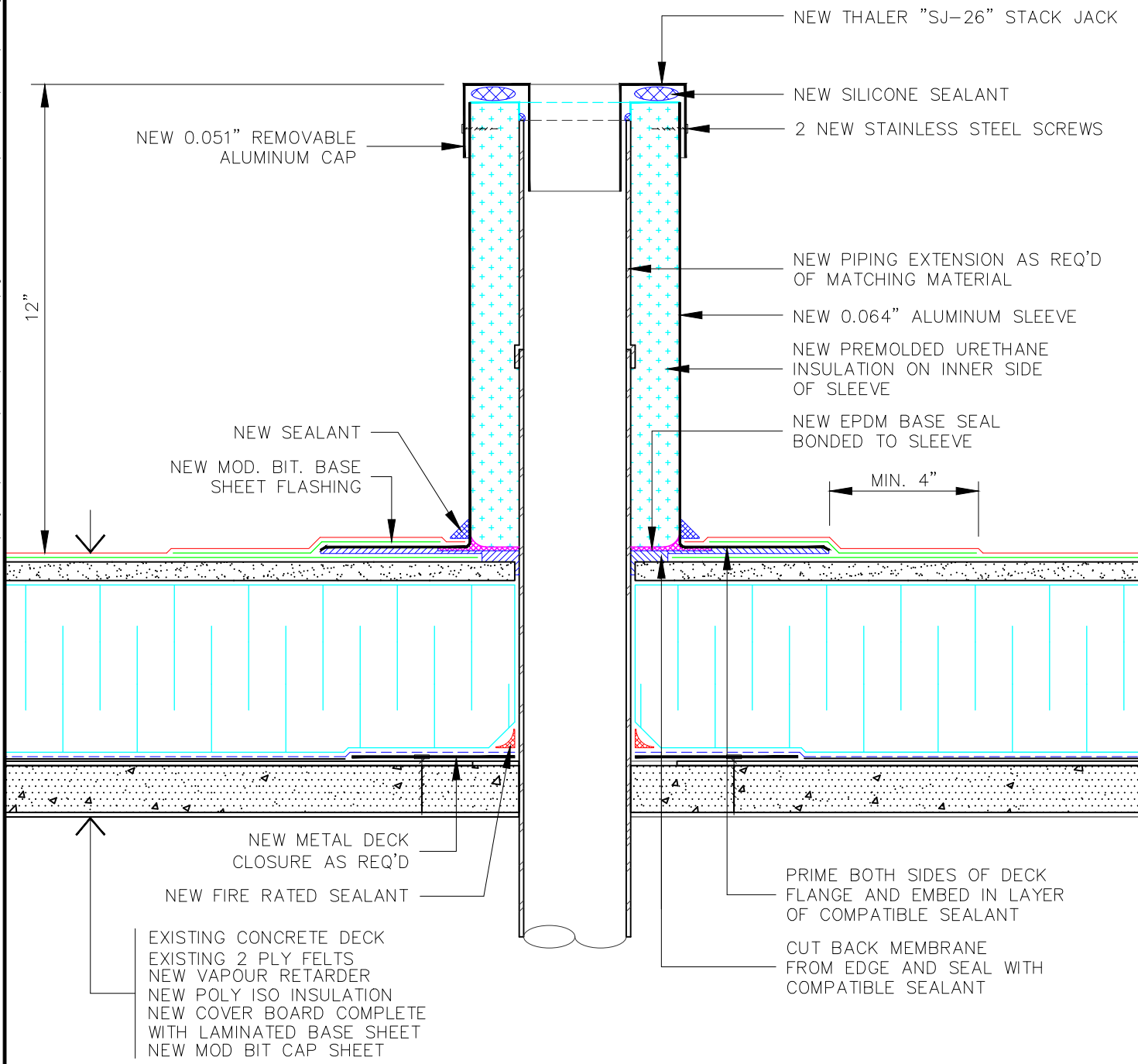
CHK. BY: V.A./K.K.



	TITLE: PERIMETER FLASHING DETAIL	REVISED:	SCALE: 3" = 1'-0"
	NOTE: NO REPRODUCTION OR USE OF THIS DRAWING IS AUTHORIZED WITHOUT EXPRESSED WRITTEN CONSENT ©COPYRIGHT 2022 IRC BUILDING SCIENCES GROUP INC.	REV'N.#:	DATE: 10 FEB 2022
		DRN. BY: A.R.	DWG.#: PMM430
		CHK. BY: T.K.C./K.K.	

M:\Projects2\25001-25050\25048_Spruce Lake Pumping Station, Saint John, NB\NR22-0029P\04_CAD\02_Working\SMM(2)581-RR-MD-ISO-00-SJ-26.dwg

NOTE:
 AT NEW PLUMBING STACKS SITUATED WITHIN GREEN ROOF SYSTEM,
 INSTALL NEW METAL EDGING COMPONENTS AS RECOMMENDED AND
 SUPPLIED BY GREEN ROOF MANUFACTURER



TITLE: PLUMBING STACK DETAIL

NOTE: NO REPRODUCTION OR USE OF THIS DRAWING IS AUTHORIZED WITHOUT EXPRESSED WRITTEN CONSENT
 © 2022 IRC BUILDING SCIENCES GROUP, A RIMKUS COMPANY

REVISED:

REV'N.#:

DRN. BY: A.R.

CHK. BY: V.A./K.K.

SCALE: 3" = 1'-0"

DATE: 22 MAR. 2022

DWG.#: SMM581