

ISSUE		
No.	date	description

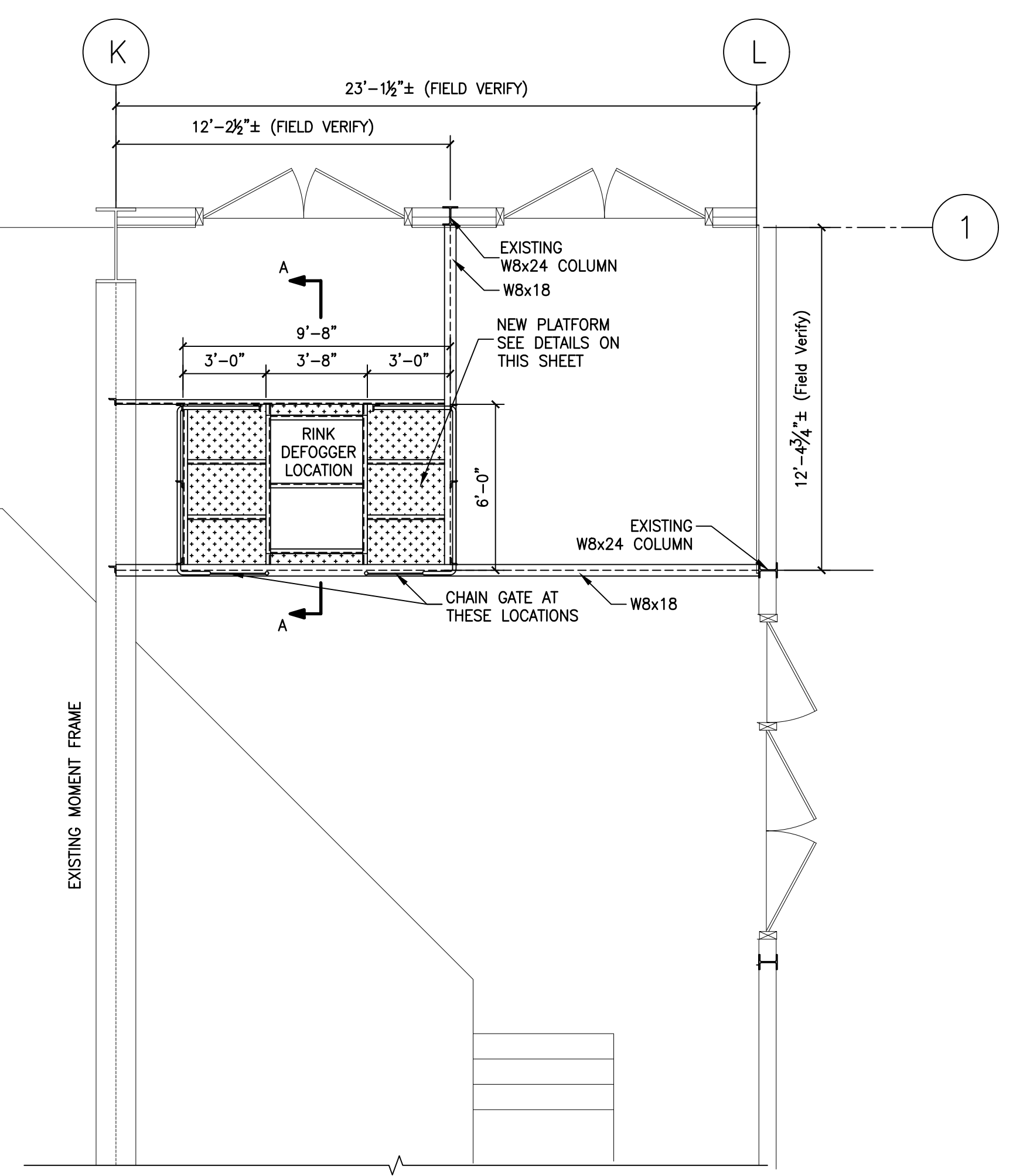
REVISION		
No.	date	description

project:
Rink Deffogger
Platform 1
Lord Beverbrook Rink
City of Saint John

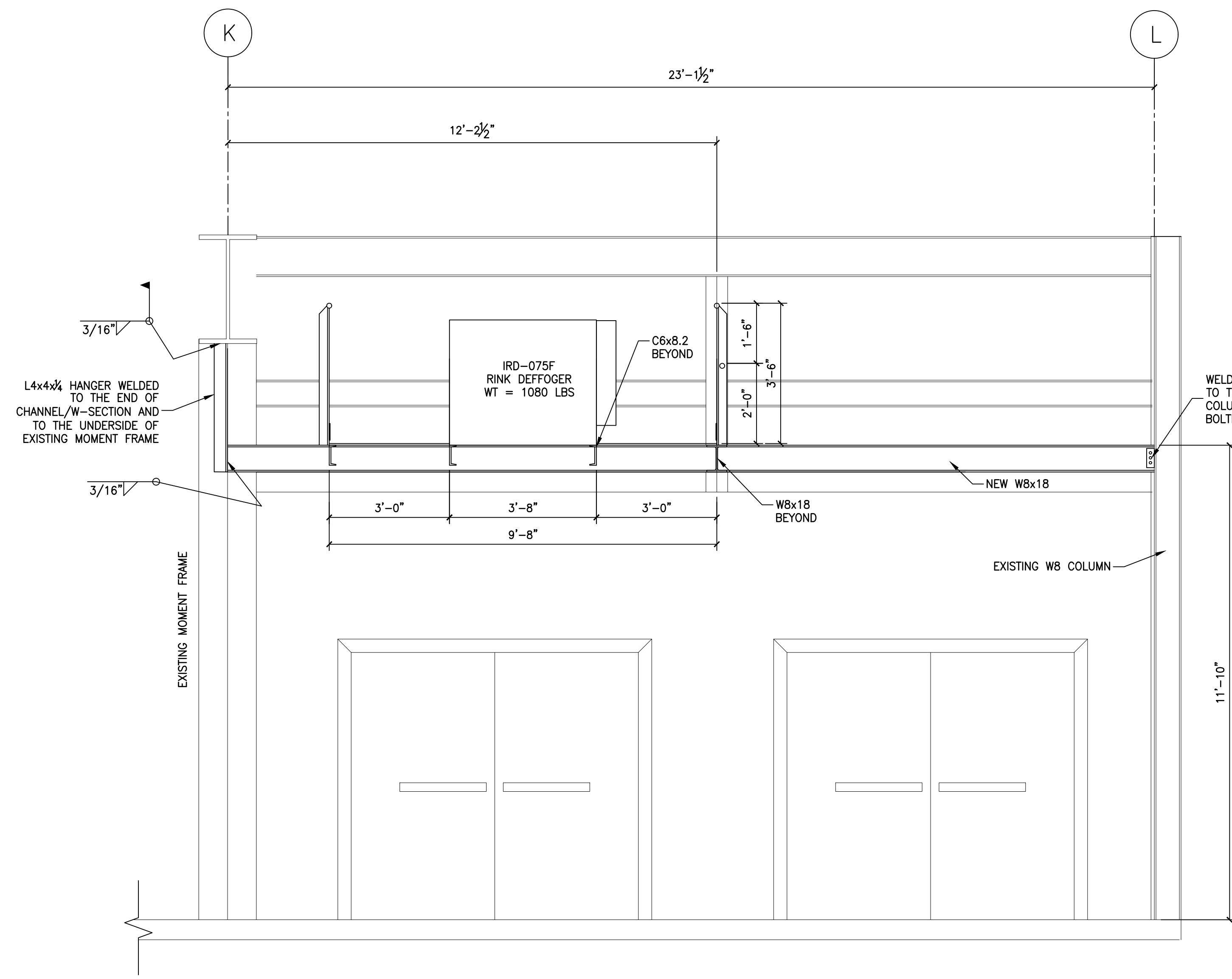
drawing:
Structural
Details

designed by: R.KELLEY	scale: AS NOTED
drawn by: R.J.K	date: APRIL 2022
checked by: C.J.L.	project no. FDNEN 20-07

drawing no.
S-1



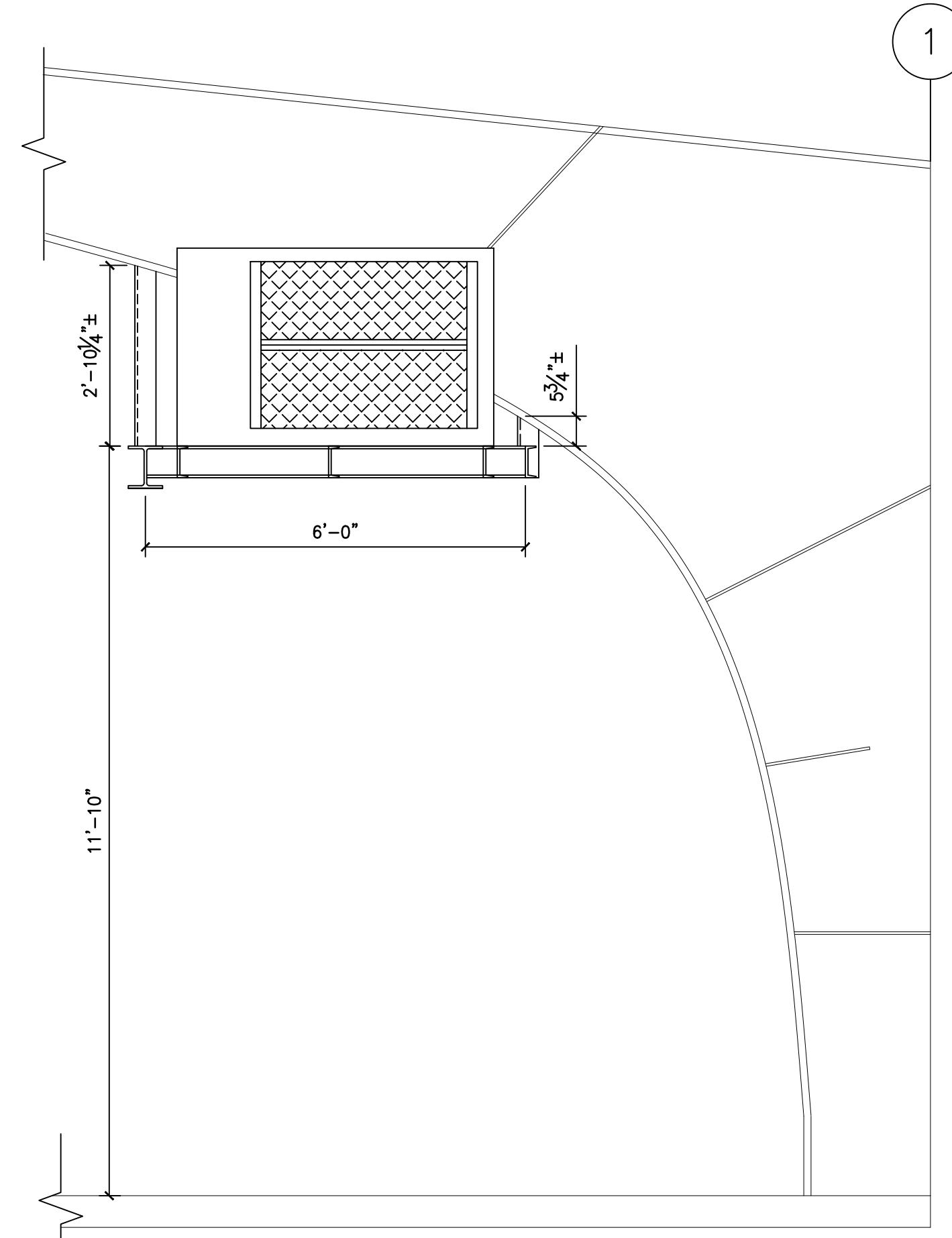
PLAN VIEW OF PLATFORM
 SCALE: 1/4" = 1'-0"



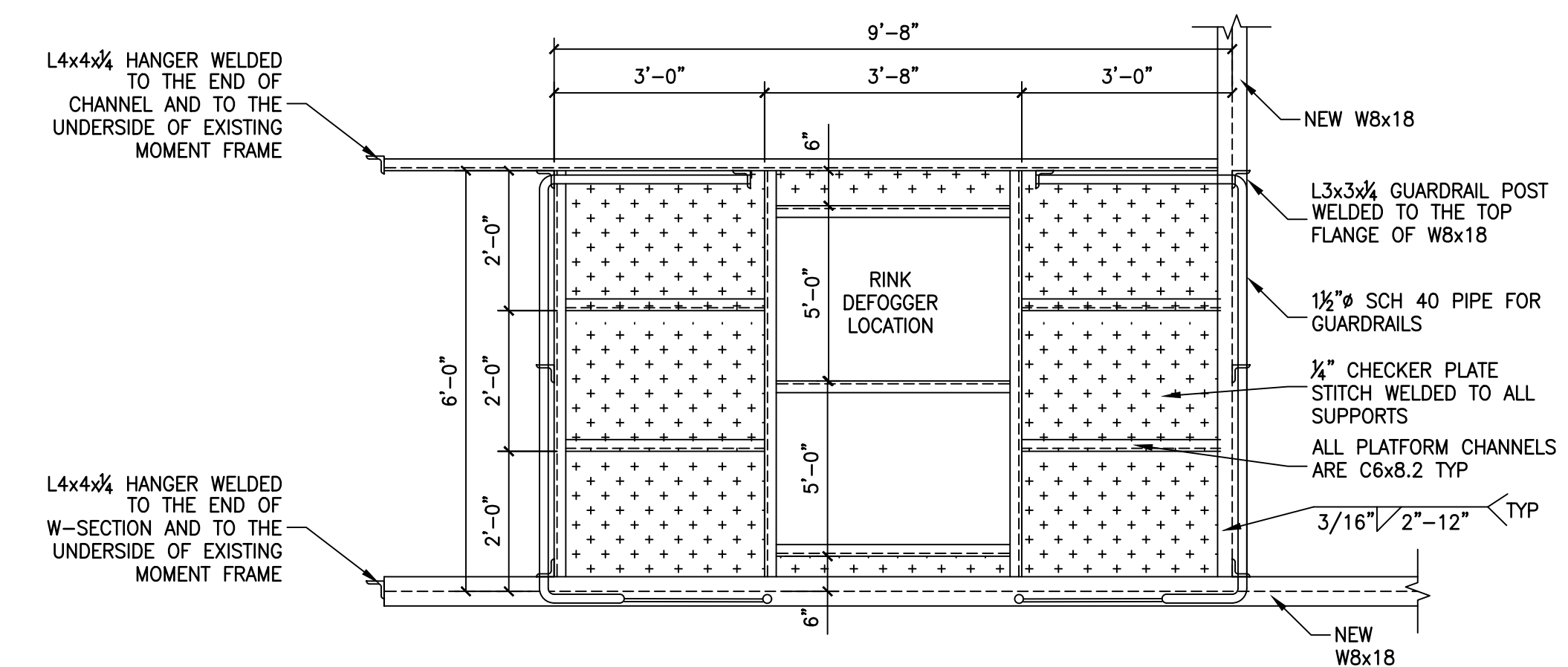
ELEVATION VIEW OF PLATFORM
 SCALE: 1/2" = 1'-0"

GENERAL NOTES
 ALL WORK SHALL BE DONE IN ACCORDANCE WITH THE NATIONAL BUILDING CODE OF CANADA 2015.
 CHECK ALL DIMENSIONS PERTAINING TO THE EXISTING BUILDING AND REPORT ANY DISCREPANCIES TO THE ENGINEER BEFORE PROCEEDING WITH ANY WORK.
 ENGINEER SHALL BE ADVISED IN WRITING PRIOR TO CUTTING OR REMOVAL OF ANY STRUCTURAL STEEL, CONCRETE OR STRUCTURAL MASONRY MEMBERS. CONTRACTOR SHALL NOT CUT STRUCTURAL MEMBERS WITHOUT WRITTEN PERMISSION FROM THE STRUCTURAL ENGINEER.
 THESE DESIGN DOCUMENTS ARE PREPARED SOLELY FOR USE BY THE PARTY WITH WHOM THE DESIGN PROFESSIONAL HAS ENTERED INTO A CONTRACT WITH AND THERE ARE NO REPRESENTATIONS OF ANY KIND MADE BY THE DESIGN PROFESSIONAL TO ANY PARTY WITH WHOM THE DESIGN PROFESSIONAL HAS NOT ENTERED INTO A CONTRACT WITH.

STEEL NOTES
 ALL WORK SHALL BE DONE IN ACCORDANCE WITH CAN/CSA-S16-01 "LIMIT STATES DESIGN OF STEEL STRUCTURES".
 MATERIALS: CAN/CSA-G40.21
 ALL PLATES, CHANNELS & ANGLES - GRADE 300W
 STRUCTURAL BOLTS, NUTS AND WASHERS - A325
 WELDING MATERIAL - CSA W59-03
 W & SECTIONS - GRADE 350W
 BEAM CONNECTIONS SHALL BE DESIGNED FOR REACTIONS DUE TO MAXIMUM UNIFORMLY DISTRIBUTED LOADS WHICH THE GIVEN SECTION IS CAPABLE OF RESISTING IN A LATERALLY SUPPORTED CONDITION, UNLESS NOTED OTHERWISE. CONNECT ALSO FOR A MINIMUM TENSILE OR COMPRESSIVE FORCE OF 15 KIPS (SPECIFIED LOAD) UNLESS NOTED OTHERWISE.
 THE LOCATION FOR ALL SHOP AND FIELD SPLICES IS SUBJECT TO APPROVAL BY THE ENGINEER.
 ALL WELDING SHALL BE DONE IN ACCORDANCE WITH CSA W59-03.
 STEEL FABRICATOR SHALL BE CERTIFIED TO DIVISION 1, OR 2.1; AS RECOGNIZED BY THE CANADIAN WELDING BUREAU.
 VERIFY DIMENSIONS AND CONDITION OF EXISTING WORK BEFORE COMMENCING FABRICATION AND REPORT ANY DISCREPANCY AND POTENTIAL PROBLEM AREAS TO ENGINEER AND AWAIT INSTRUCTIONS.
 ALL ARCHITECTURALLY EXPOSED CONNECTIONS SHALL BE WELDED AND GROUND FLUSH EXCEPT WHERE APPROVED OTHERWISE.
 PAINTING:
 INTERIOR STEEL:
 PREPARATION: DEGREASE ACCORDING TO SSPC-STANDARD SPL-63 "SOLVENT CLEANING". BLAST CLEAN TO SSPC-SP7 "BRUSH-OFF BLAST CLEANING".
 PAINT: APPLY ONE COAT CISC/CPMA STANDARD 1-73A "QUICK PRIMER" TO 50 MICROMETERS DRY FILM THICKNESS IN ACCORDANCE WITH MANUFACTURER'S INSTRUCTIONS. FIELD TOUCHUP ALL DAMAGED OR UNPAINTED SURFACES. DO NOT PAINT WHEN TEMPERATURE IS LOWER THAN 7°C. CLEAN SURFACES TO BE FIELD WELDED; DO NOT PAINT. PAINT ON DRY SURFACES, FREE FROM RUST, SCALE AND GREASE.



SECTION A-A
 SCALE: 1/2" = 1'-0"



PLAN VIEW OF PLATFORM
 SCALE: 1/2" = 1'-0"