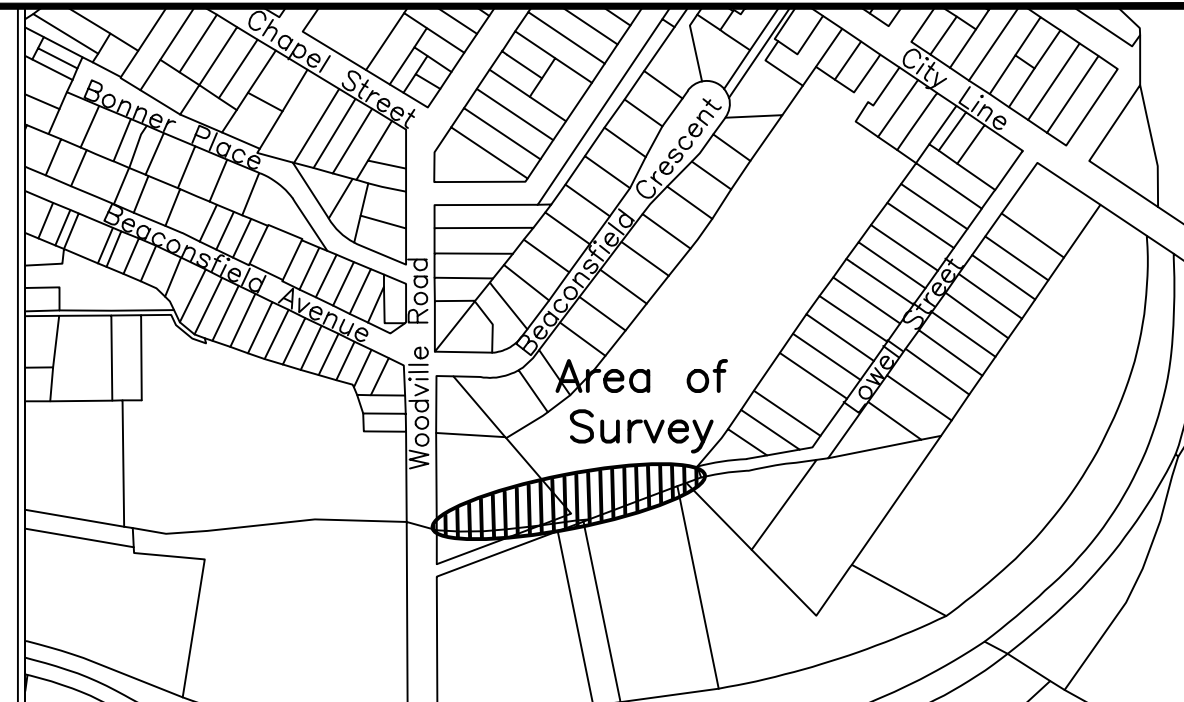
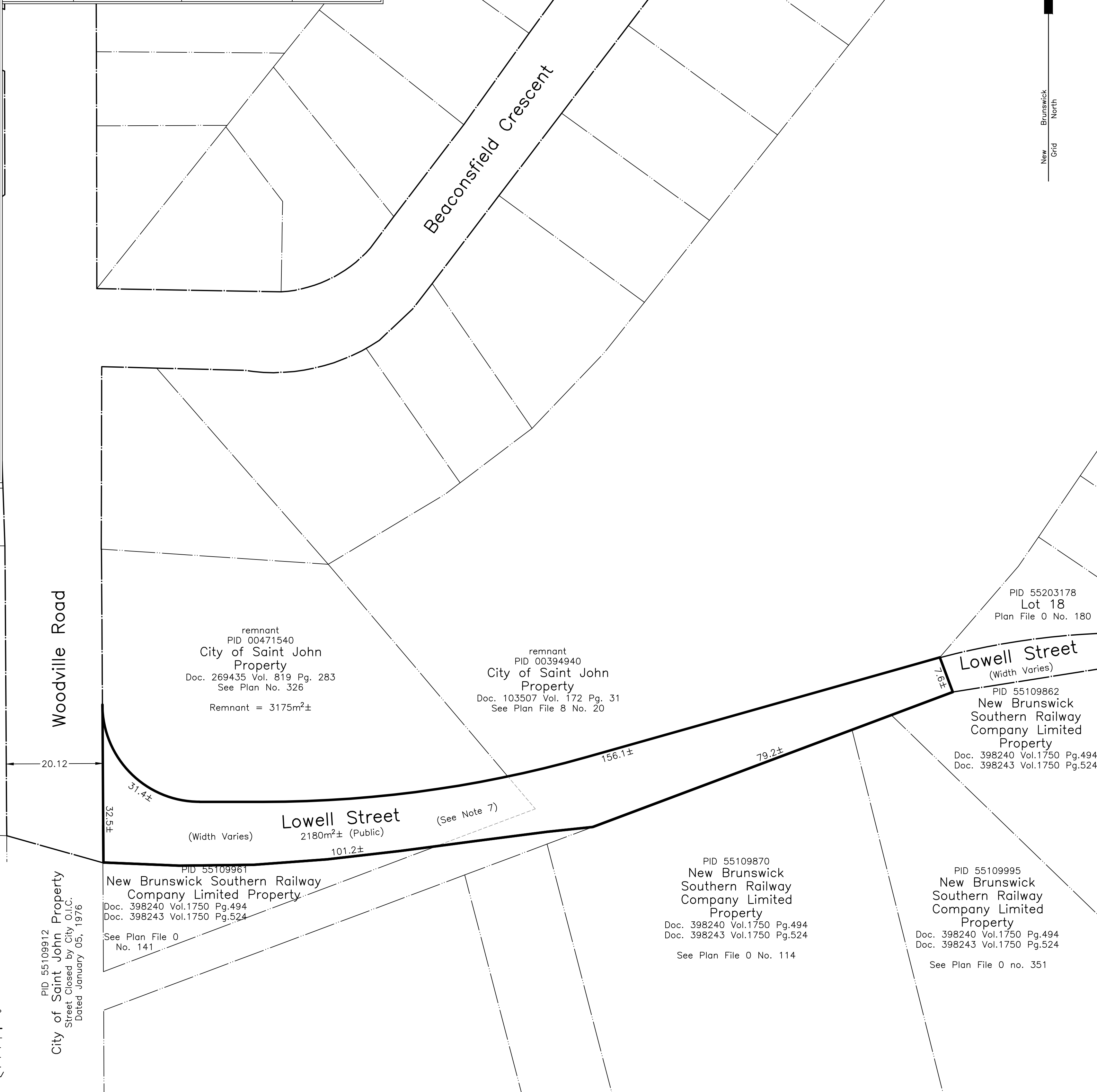


ENDORSEMENTS

New Brunswick Grid Co-Ordinate Values			
Sta.	X	Y	Rmks.



Registration Data

Doc. 269435 Vol. 819 Pg. 283 Reg. 1977-06-06	Marathon Realty Company Limited to City of Saint John
Doc. 103507 Vol. 172 Pg. 31 Reg. 1922-11-10	Walter U. Homfray (Per Mortgagee) to The City of Saint John

Owners _____
City of Saint John - Name - Title

_____ City of Saint John - Name - Title

- NOTES**
- Directions are New Brunswick Grid azimuths derived from tabulated N.B. coordinate survey monuments.
 - All distances are in metres and are grid distances, calculated using a combined scale factor and using geoid model HT2_0; to convert to imperial equivalents divide by 0.3048.
 - Area of survey outlined thus , peripheral information compiled from various sources.
 - All document and plan references refer to the Registry Office for Saint John County or the Land Titles District of New Brunswick.
 - Field survey completed on ----.
 - All computations performed and coordinates shown on this plan are based on New Brunswick Stereographic Double Projection and the NAD83(CSRS) Reference System as realized by Service New Brunswick High Precision Network coordinate survey monuments.
 - In accordance with Section 88(6)(a) of the Community Planning Act land indicated hereon as a Public Street vests in the City of Saint John, free from any lien or encumbrances, as a local government street.

Purpose Of Plan
To create a public street from a portion of PID 00471540 and a portion of PID 00394940.

Tentative Subdivision Plan
City of Saint John Subdivision,
Lowell Street,
City of Saint John,
Parish of Saint John,
Saint John County, New Brunswick

HUGHES SURVEYS & CONSULTANTS INC.
Nov. 22, 2024.
Date

1 : 500

Dwg. No. S24342	Disk No. 2024	Topos H24342	Disk No. 2024
Dwn. by M.C.B.	Job No. Y24-342	Rev. No.	Map Ref. G/01-24

LEGEND

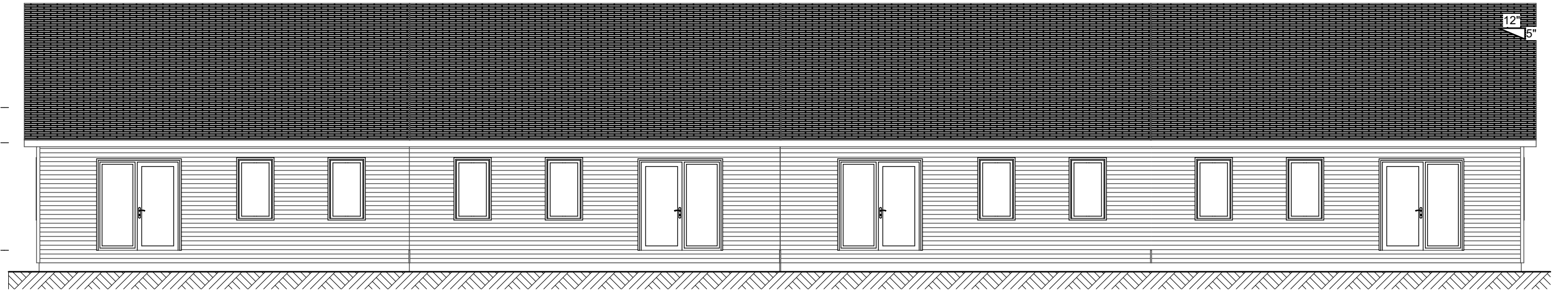
- ROUND IRON BAR FOUND
- SQUARE IRON BAR FOUND
- IRON PIPE FOUND
- STANDARD SURVEY MARKER FOUND
- STANDARD SURVEY MARKER PLACED
- WOODEN POST PLACED
- CALCULATED POINT
- TABULATED POINT
- TRAVESER CONTROL POINT
- N.B. GRID CO-ORDINATE MONUMENT
- HYDRO POLE / UTILITY WIRE
- FOUNDATION
- STREET R.O.W.
- UTILITY EASEMENT
- ADJACENT PROPERTY LINE
- CENTRELINE
- FENCE
- STRUCTURE

PID 55109912
City of Saint John Property
Street Closed by City O.I.C.
Dated January 05, 1976

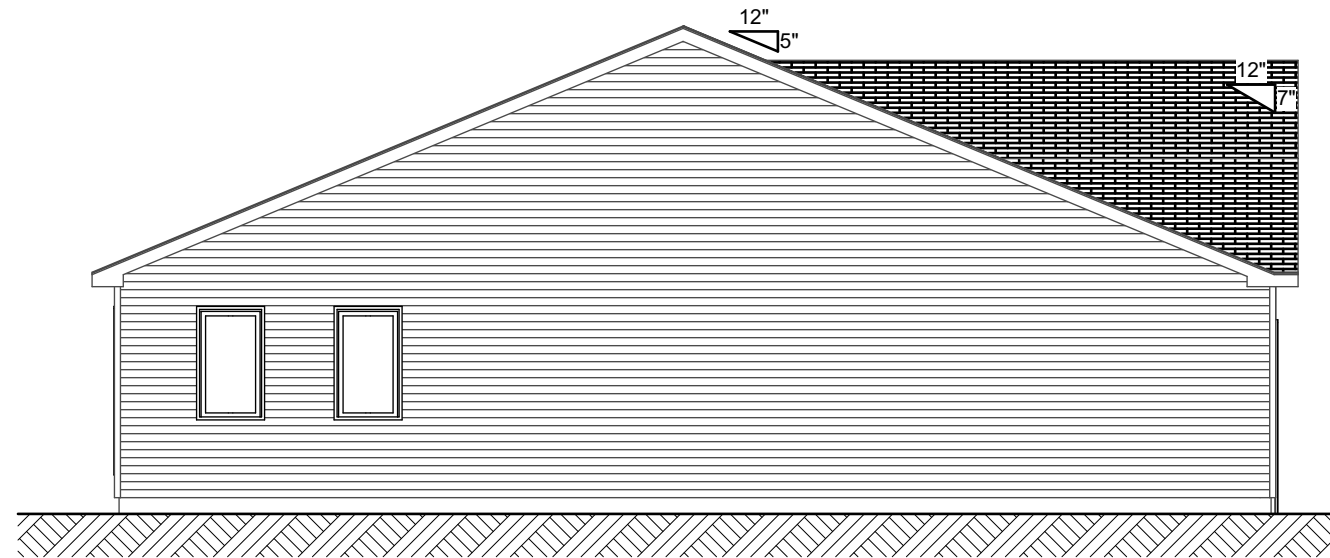
H:\ACTIVE_2024_1\2024\hpa\S24342\DWG\S24342.dwg November 22, 2024 2:20:23 PM

ONE STORY TOWNHOUSES WITH GARAGE






BACK ELEVATION



LEFT ELEVATION

 IRONWOOD MANUFACTURED HOMES	CLIENT	PROJECT NAME	HOME MODEL 2BD TOWNHOUSE W/ GARAGE HOUSE FLOOR AREA: 1031.6 sq/ft GARAGE sq/ft 291.6 TOTAL sq/ft/ HOUSE: 1323.2 # OF HOMES: 4 TOTAL sq/ft OF BUILDING: 5292.8 PROV/STATE: NB TYPE: TOWNHOUSE	REVISION #	ISSUE DATE
	MOSAICA DEVELOPMENTS				ORG
Strength Beyond The Wood 110 FIRST PLYMOUTH ROAD WOODSTOCK, NB CANADA 1-833-905-7700					

